

Enclosures

<b>Material</b>	DMC (Dough Moulding Compound)
<b>Operating Temperature</b>	-50° C to + 200° C
<b>Glow Wire Capability / Flammability</b>	960° / UL94 V0
<b>Expected UV Life (Direct Exposure)</b>	GRP Flap 25 years + , Plastic Flap
<b>IP Level</b>	IP4X
<b>Security Level</b>	Level 1 without pad-lock and Level 3 with pad-lock

Hinges

Locks

Handles

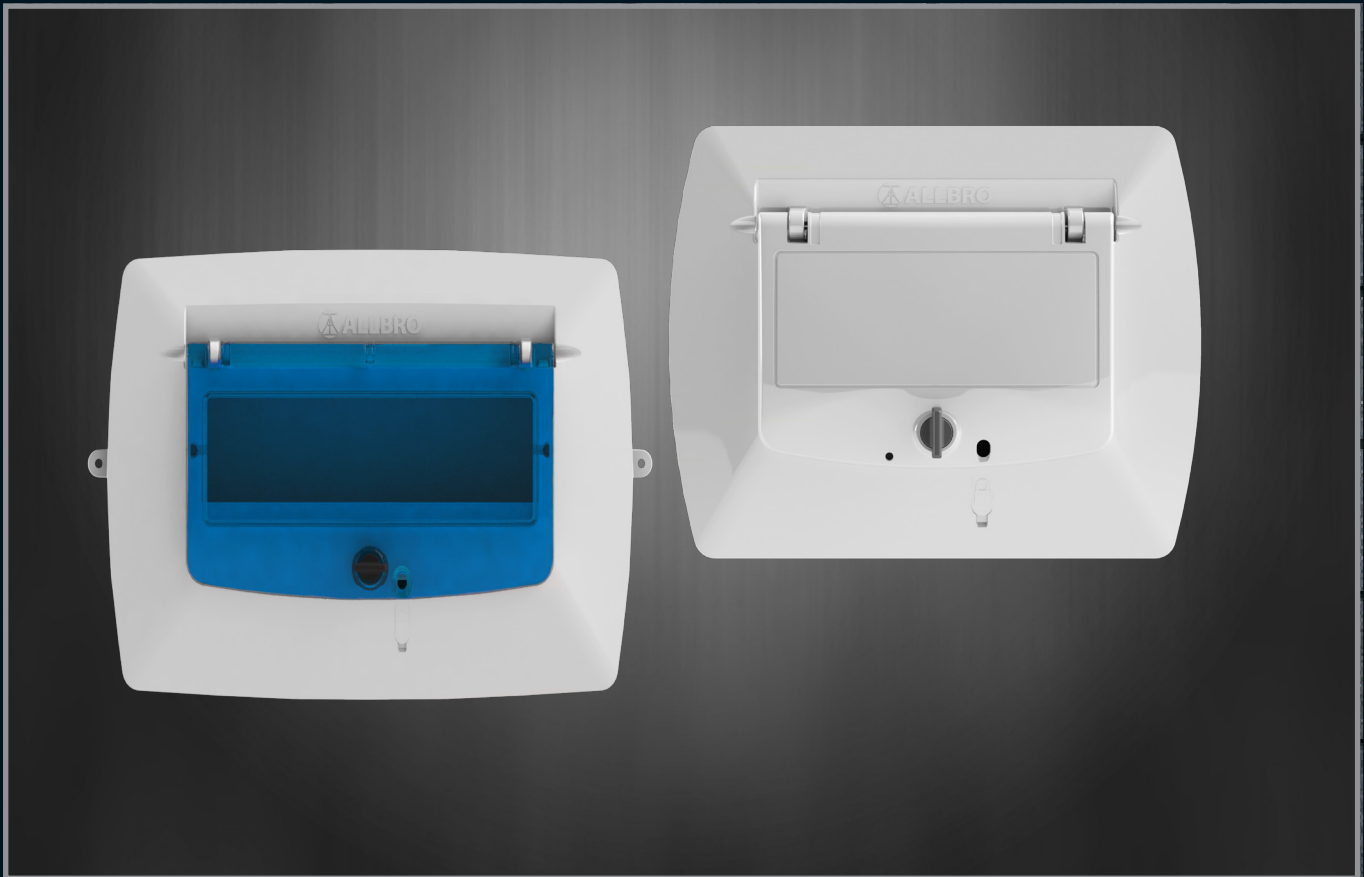
Accessories

Rotary Operating Handles

Insulators

Transformer Equipment

Index



Part Number	Description	H (mm)	W (mm)	D (mm)
040-965	8 Way Surface ADB GRP	216	266	111
040-981	8 Way Flush ADB GRP	216	266	111
040-979	8 Way Surface ADB PC	216	266	111
040-968	8 Way Flush ADB PC	216	266	111



**Pad-lockable**  
 ADB- Distribution Boards fits pad-lock size 262,  
 \*Size may vary according to make.

