

# Terminal Box Features

High impact enclosures for tough environments



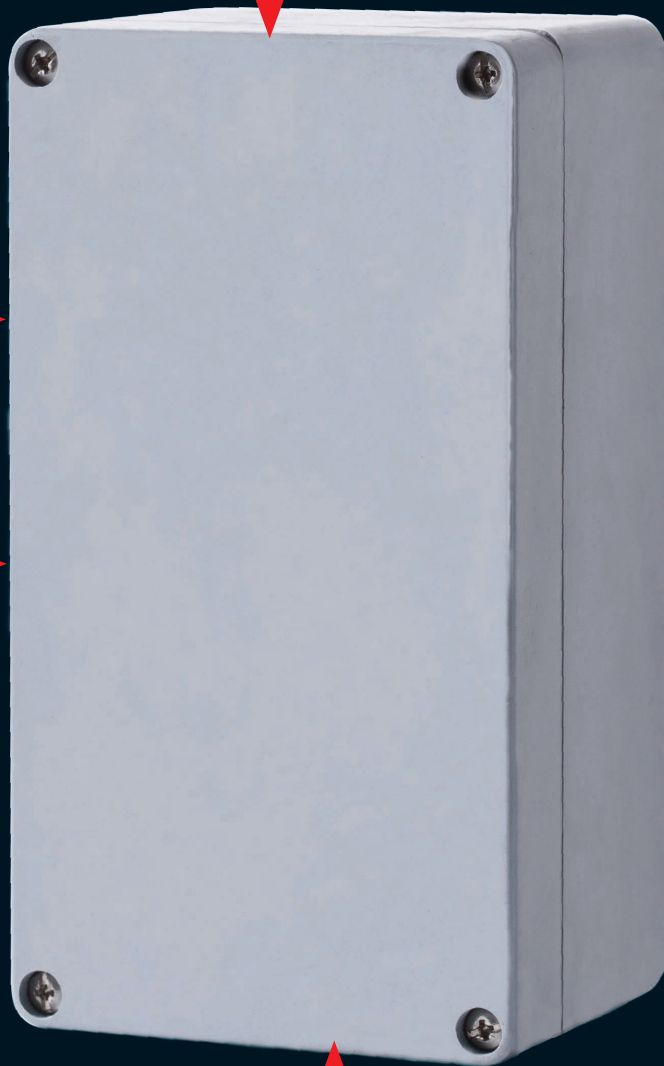
**Weather & UV Resistant**  
(25 Year outdoor life)



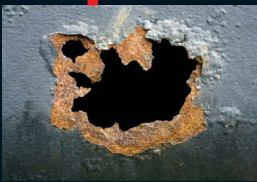
**Halogen Free**



**Flame Retardant**



**17 Different sizes**



**Durable GRP Material**

**Ex Versions Available**

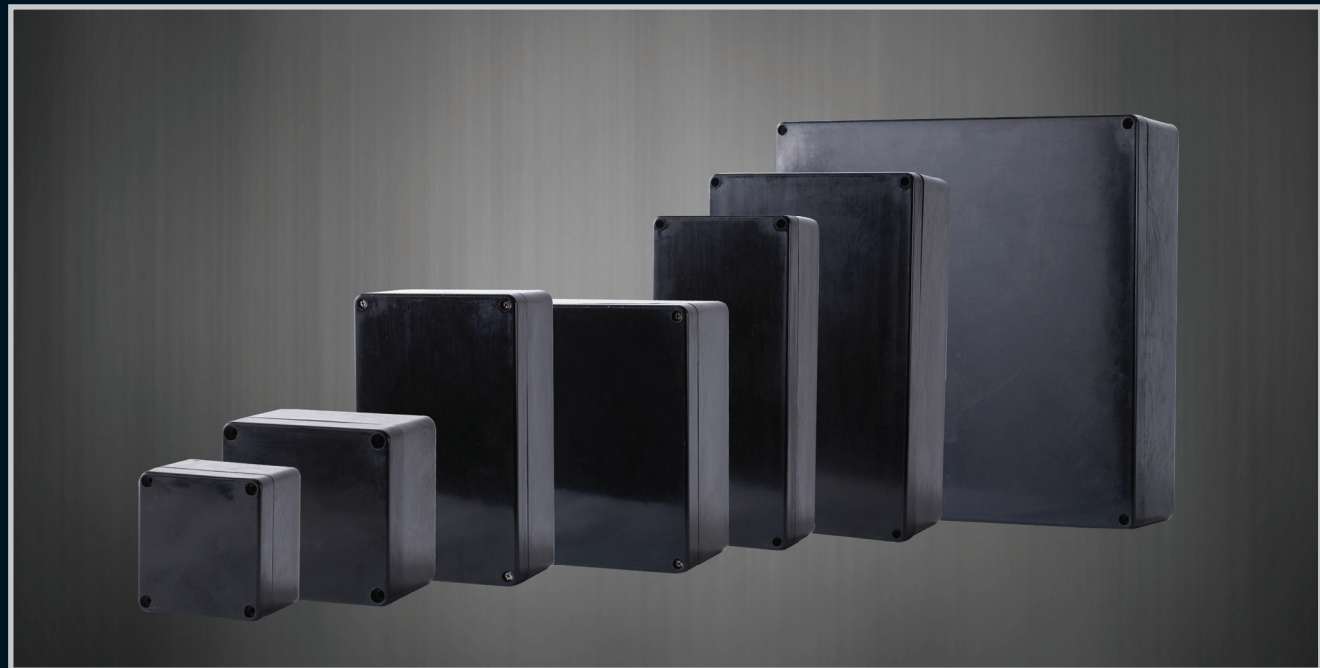
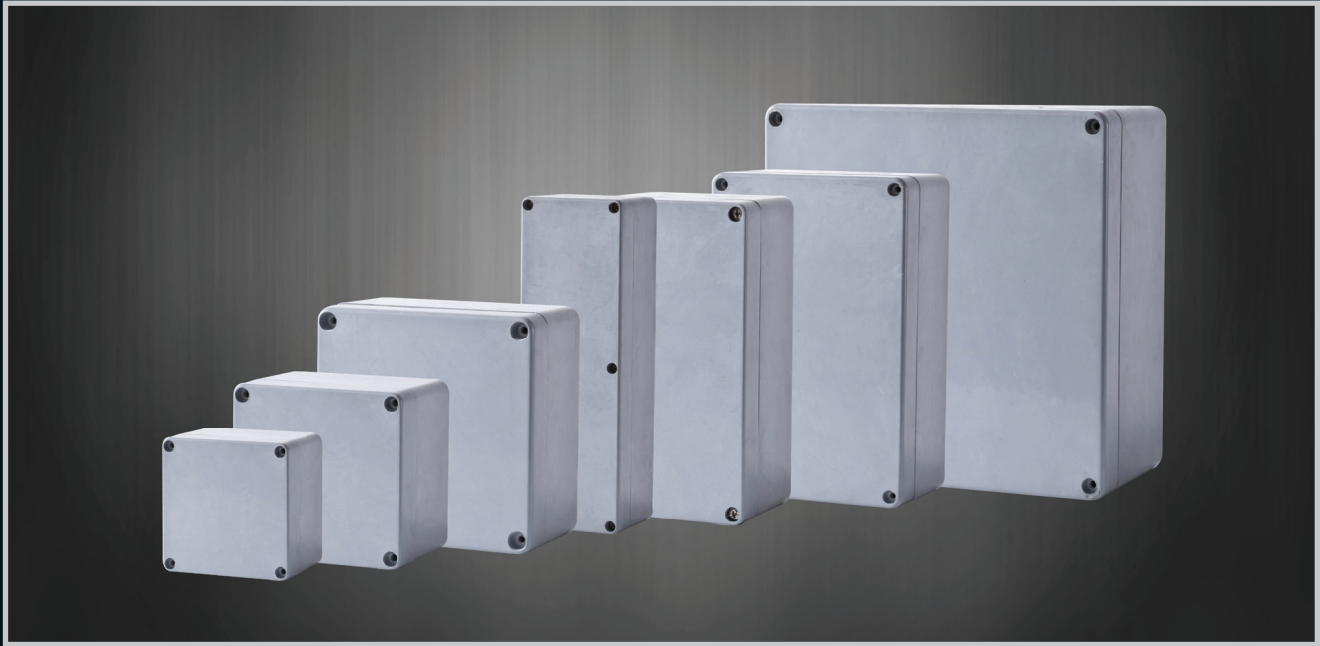


# Terminal Boxes

High impact enclosures for tough environments



|  |  |
|--|--|
| <b>Material</b>                            | DMC (Dough Moulding Compound)  |
| <b>Operating Temperature</b>               | -50° C to + 200° C   |
| <b>Glow Wire Capability / Flammability</b> | 960° / UL94 V0   |
| <b>Expected UV Life (Direct Exposure)</b>  | 25 years +   |
| <b>IP Level</b>                            | IP68   |
| <b>IK Level</b>                            | IK9  |
| <b>Security Level</b>                      | Security Level 1 for Round Enclosure and Security Level 2 for Square/Rectangle Enclosure |



Enclosures

Hinges

Locks

Handles

Accessories

Rotary Operating Handles

Insulators

Transformer Equipment

Index

Enclosures

## UB40 & UB41 Enclosure



Hinges

Locks

| External Dimensions (mm) |     |    | Internal Dimensions (mm) |     |    | Part Number  | Description                | IP Level | Qty per box |
|--------------------------|-----|----|--------------------------|-----|----|--------------|----------------------------|----------|-------------|
| H                        | W   | D  | H                        | W   | D  |              |                            |          |             |
| 115                      | 115 | 83 | 90                       | 90  | 70 | 040-702      | UB40 (20mm)                | 68       | 20          |
| 140                      | 140 | 90 | 124                      | 124 | 78 | 040-793      | UB41 (25mm)                | 68       | 20          |
| 115                      | 115 | 83 | 90                       | 90  | 70 | 040-702/TERM | UB40 (20mm) with terminals | 68       | 20          |
| 140                      | 140 | 90 | 124                      | 124 | 78 | 040-793/TERM | U41 (25mm) with terminals  | 68       | 20          |

Handles

## UB40 Bottom Entry Enclosure



Accessories

Rotary Operating Handles

Insulators

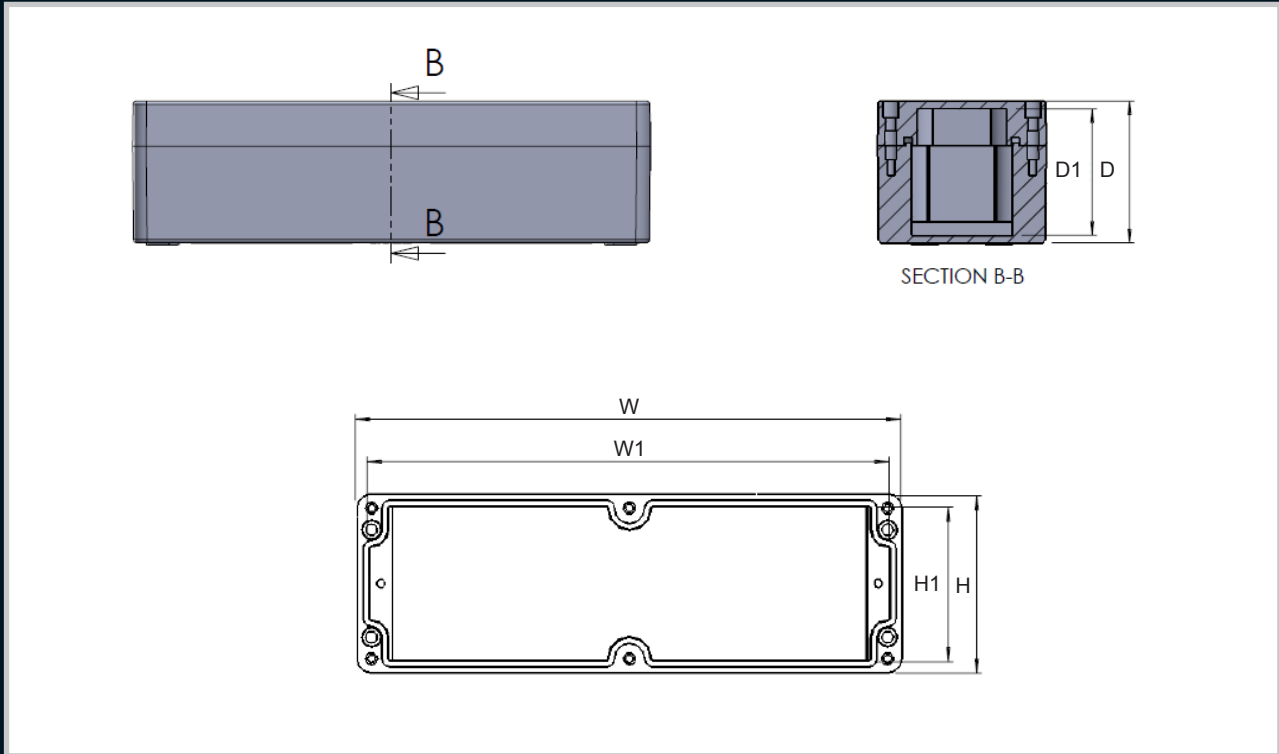
| External Dimensions (mm) |     |     | Internal Dimensions (mm) |    |    | Part Number     | Description  | IP Level | Qty per box |
|--------------------------|-----|-----|--------------------------|----|----|-----------------|--|----------|-------------|
| H                        | W   | D   | H                        | W  | D  |                 |  |          |             |
| 108                      | 140 | 110 | 65                       | 90 | 90 | 040-702/BE      | UB40 Bottom Entry (20mm)                                       | 68       | 20          |
| 108                      | 140 | 110 | 65                       | 90 | 90 | 040-702/BE/TERM | Junction Box UB40/A1/20 (Bottom Entry) complete with Terminals | 68       | 20          |

Transformer Equipment

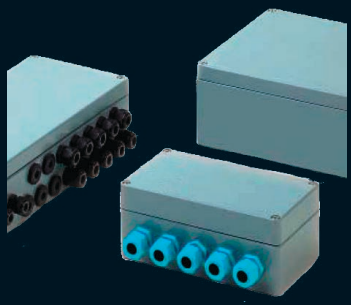
### **BENEFITS & FEATURES**

- For general industrial and mining electrical installations.
- No exposed metal parts.
- Dust and waterproof IP68.
- No drilling or tapping of cable entries required.
- Internal earthing to all entries and rail provided.

Index



| External Dimensions (mm) |     |     | Internal Dimensions (mm) |     |     | Part Number |            | IP Level | Qty per box |
|--------------------------|-----|-----|--------------------------|-----|-----|-------------|------------|----------|-------------|
| H                        | W   | D   | H1                       | W1  | D1  | Black (Eex) | Grey       |          |             |
| 75                       | 80  | 61  | 65                       | 70  | 56  | 0808KE/I    | 0808POK/I  | 68       | 10          |
| 75                       | 110 | 64  | 65                       | 100 | 54  | 0811KE/I    | 0811POK/I  | 68       | 10          |
| 75                       | 160 | 61  | 65                       | 150 | 54  | 0816KE/I    | 0816POK/I  | 68       | 10          |
| 75                       | 190 | 61  | 65                       | 180 | 54  | 0819KE/I    | 0819POK/I  | 68       | 10          |
| 75                       | 230 | 63  | 65                       | 220 | 54  | 0823KE/I    | 0823POK/I  | 68       | 10          |
| 120                      | 125 | 90  | 110                      | 115 | 80  | 1212KE/I    | 1212POK/I  | 68       | 10          |
| 120                      | 220 | 95  | 110                      | 210 | 85  | 1222KE/I    | 1222POK/I  | 68       | 10          |
| 160                      | 160 | 95  | 147                      | 147 | 86  | 1616KE/I    | 1616POK/I  | 68       | 10          |
| 160                      | 260 | 95  | 146                      | 246 | 86  | 1626KE/I    | 1626POK/I  | 68       | 10          |
| 160                      | 360 | 95  | 146                      | 346 | 86  | 1636KE/I    | 1636POK/I  | 68       | 10          |
| 160                      | 560 | 95  | 146                      | 550 | 86  | 1656KE/I    | 1656POK/I  | 68       | 10          |
| 250                      | 255 | 128 | 237                      | 242 | 113 | 2526KE/I    | 2526POK/I  | 68       | 10          |
| 250                      | 400 | 128 | 237                      | 387 | 113 | 2540KE/I    | 2540POK/I  | 68       | 10          |
| 250                      | 600 | 128 | 237                      | 587 | 121 | 2560KE/I    | 2560POK/I  | 68       | 10          |
| 410                      | 400 | 128 | 387                      | 397 | 113 | 4140KE/I    | 4140POK/I  | 68       | 10          |
| 250                      | 255 | 163 | 237                      | 242 | 149 | 2526KE/DI   | 2526POK/DI | 68       | 10          |
| 250                      | 400 | 163 | 237                      | 387 | 149 | 2540KE/DI   | 2540POK/DI | 68       | 10          |



\* Versions Available

- Enclosures
- Hinges
- Locks
- Handles
- Accessories
- Rotary Operating Handles
- Insulators
- Transformer Equipment
- Index