



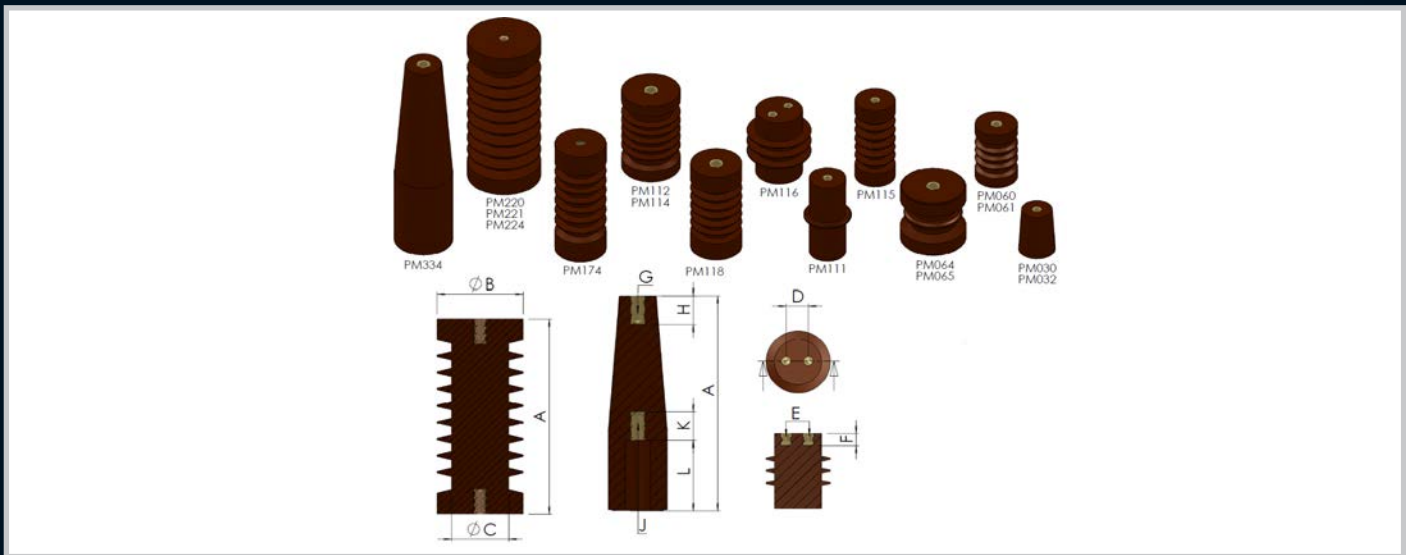
# 7

**Insulators**



					
PM Pg.183	PM Pg.183	B Pg.184	SP Pg.185	SL Pg.186	SPL Pg.187
					
CP Pg.188	CL & CPL Pg.189	GL Pg.190	GP Pg.191	GPL Pg.192	HP Pg.193
					
HPL & HL Pg.194	IL Pg.195	SM Pg.196	WP Pg.197	OP Pg.198	VP & VL Pg.199
					
KNOBS Pg.200	RED STEPPED Pg.201	RED STEPPED Pg.201	3 CEN BUSBARS Pg.202	BUSBAR SUPPORT Pg.202	AL BUSBAR SUPPORT Pg.203
					
FUSES Pg.204					

# Medium and High Voltage Insulators PM - Series



PART NUMBER	CAT N°	NOMINAL VOLTAGE	NO. OF SHEDS	A	B	C	D	E	F	G	H	J	K	L	B.I.L kv	MIN FAIL Kn	UNIT MASS
050-180	PM030	3.3kV	-	70	50	42	-	-	-	M10	14	M10	14	-	45	4	228g
050-181	PM032	3.3kV	-	70	50	40	25	M8	12	-	-	M8	12	-	45	4	246g
050-100	PM060	6.6kV	3	90	57	45	-	-	-	M12	17	M12	17	-	60	4	354
050-116	PM061	6.6kV	3	90	55	40	32	M8	12	-	-	M8	12	-	60	4	344g
050-111	PM064	6.6kV	1	90	90	60	50	M10	14	-	-	M10	14	-	60	5	862g
050-104	PM065	6.6kV	3	90	55	45	32	M8	12	-	-	M12	17	-	60	4	352g
050-120	PM111	11kV	1	127	60	50	-	-	-	M10	22	M10	22	-	75	8	516g
050-142	PM112	11kV	5	130	80	62	-	-	-	M16	22	M20	32	-	95	12	1002g
050-133	PM114	11kV	5	130	80	62	46	M10	14	M16	22	M20	32	20	95	12	1002g
050-134	PM115	11kV	5	130	55	-	32	M6	10	M10	22	M16	32	14	95	-	416g
050-126	PM116	11kV	4	130	63	87	30	M10	17	M10x2	-	M10x2	17	-	95	-	840g
050-128	PM118	15kV	5	142	70	70	40	M8	12	M10	25	M16	30	-	95	9.5	850g
050-143	PM174	17.5kV	6	175	70	50	36	M6	10	M10	22	M16	40	20	125	-	985g
050-140	PM220	22kV	8	215	100	80	-	-	-	M16	22	M6	22	-	150	12	2480g
050-121	PM221	22kV	8	215	100	80	-	M12	25	-	-	M12	25	-	150	12	2480g
050-141	PM224	22kV	8	215	100	80	50	M10	14	M16	22	M20	32	20	150	12	2480g
050-161	PM334	33kV	-	295	80	50	-	-	-	M12	34	M16	32	98	200	9	2216g

Enclosures  
Hinges  
Locks  
Handles  
Accessories  
Rotary Operating Handles  
Insulators  
Transformer Equipment  
Index

Enclosures

Hinges

Locks

Handles

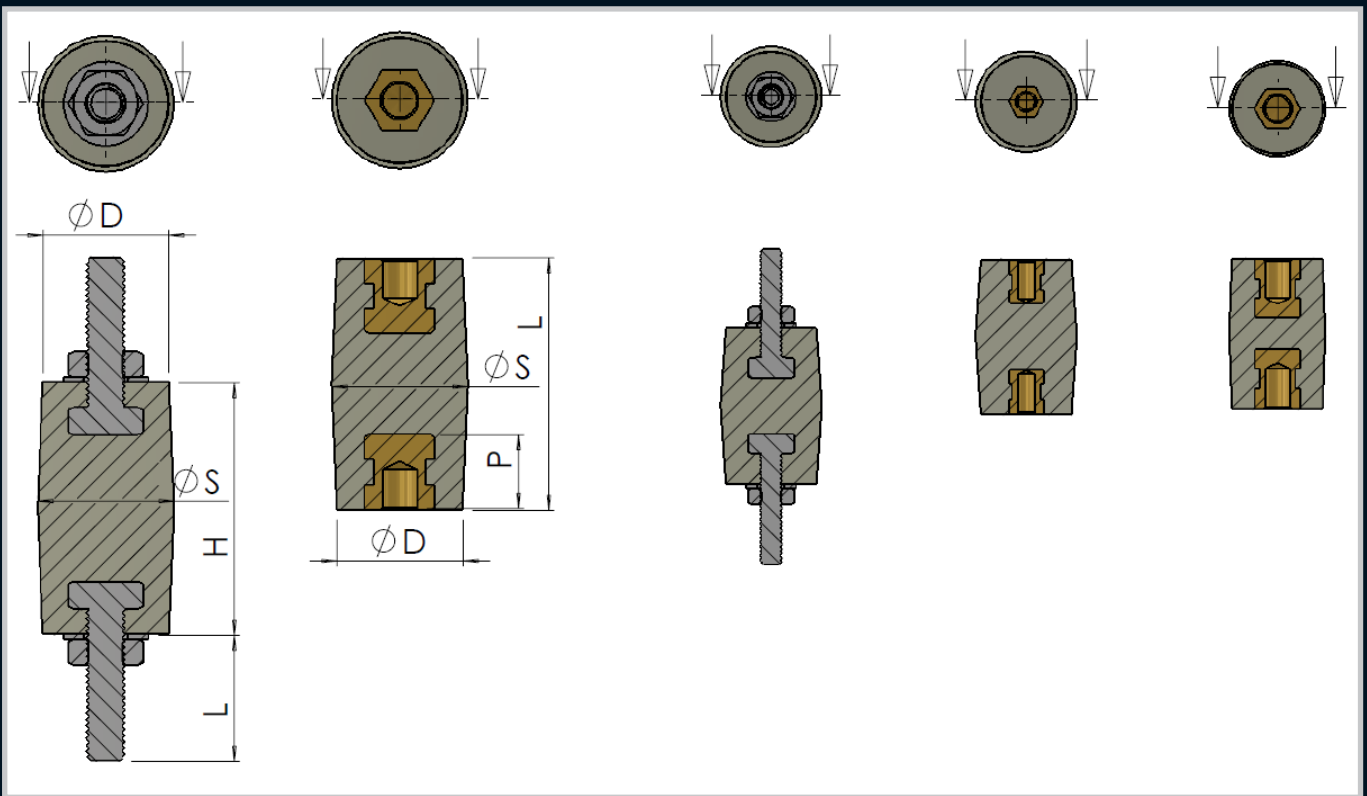
Accessories

Rotary Operating  
Handles

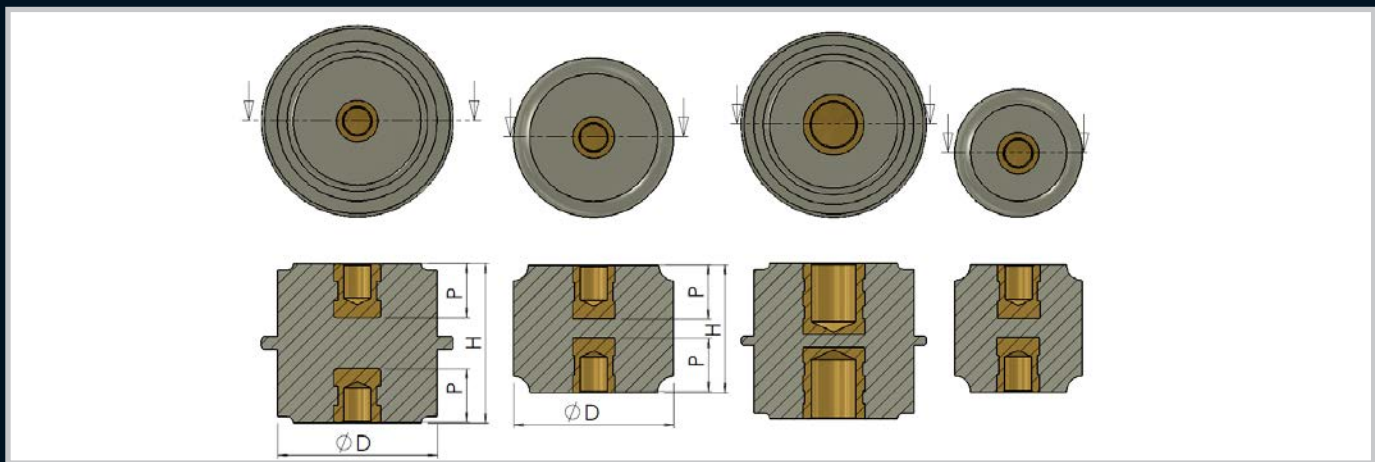
Insulators

Transformer  
Equipment

Index



PART NUMBER	TYPE & THREAD SIZE	HEIGHT H	DIAMETER D	SHED DIAMETER S	STUD LENGTH L	INSERT DEPTH P	UNIT MASS	STD PACK
050-018	BL-8	50	25	28	25	-	86g	50
050-017	BP-8	50	25	28	-	13	66g	50
050-015	BP-5	30	17	20	-	8	18g	200
050-015/BK	BP-5BK	30	17	20	-	8	18g	200
050-206	BP-6	30	17	20	-	11	18g	50
050-206/BK	BP-6BK	30	17	20	-	11	18g	50
050-016	BL-5	30	17	20	15	-	18g	50



PART NUMBER	TYPE & THREAD SIZE	H	D	P	L	STUD /INSERT	UNIT MASS (g)	STD PACK
050-088	SP-5/BK	25	20	9	-	M5	16	50
050-087	SP-5/BL	25	20	9	-	M5	16	50
050-086	SP-5/R	25	20	9	-	M5	16	50
050-031	SP-5/W	25	20	9	-	M5	16	50
050-055	SP-6/BK	40	20	12	-	M6	26	50
050-054	SP-6/BL	40	20	12	-	M6	26	50
050-053	SP-6/R	40	20	12	-	M6	26	50
050-007	SP-6/W	40	20	12	-	M6	26	50
050-061	SP-8/BK	40	30	15	-	M8	40	100
050-060	SP-8/BL	40	30	15	-	M8	40	100
050-059	SP-8/R	40	30	15	-	M8	40	100
050-009	SP-8/W	40	30	15	-	M8	40	100
050-033	SP-10/S1/W	63	40	16	-	M10	155	100
050-347	SP-10/S1/R	63	40	16	-	M10	155	100
050-034	SP-10/S2/W	75	40	16	-	M10	182	100
050-348	SP-10/S2/R	75	40	16	-	M10	182	100
050-228	SP-10/S3/W	40	50	16	-	M10	135	50
050-067	SP-10/BK	40	40	16	-	M10	80	100
050-066	SP-10/BL	40	40	16	-	M10	80	100
050-065	SP-10/R	40	40	16	-	M10	80	100
050-011	SP-10/W	40	40	16	-	M10	80	100
050-073	SP-12/BK	50	50/60	16	-	M12	190	50
050-072	SP-12/BL	50	50/60	16	-	M12	190	50
050-071	SP-12/R	50	50/60	16	-	M12	190	50
050-013	SP-12/W	50	50/60	16	-	M12	190	50

Enclosures

Hinges

Locks

Handles

Accessories

Rotary Operating  
Handles

Insulators

Transformer  
Equipment

Index

Enclosures

Hinges

Locks

Handles

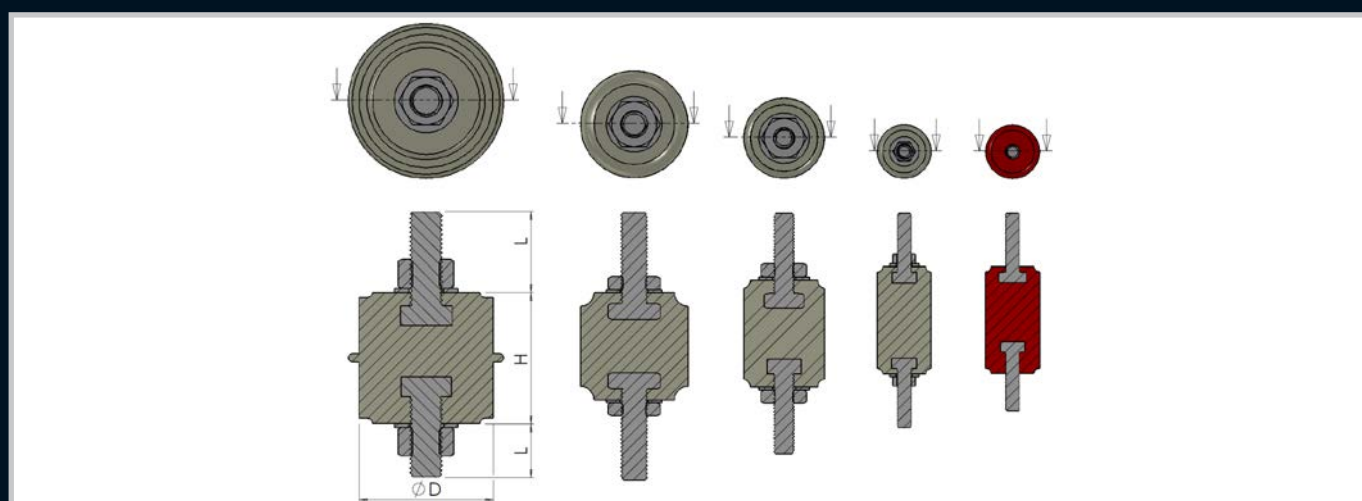
Accessories

Rotary Operating  
Handles

Insulators

Transformer  
Equipment

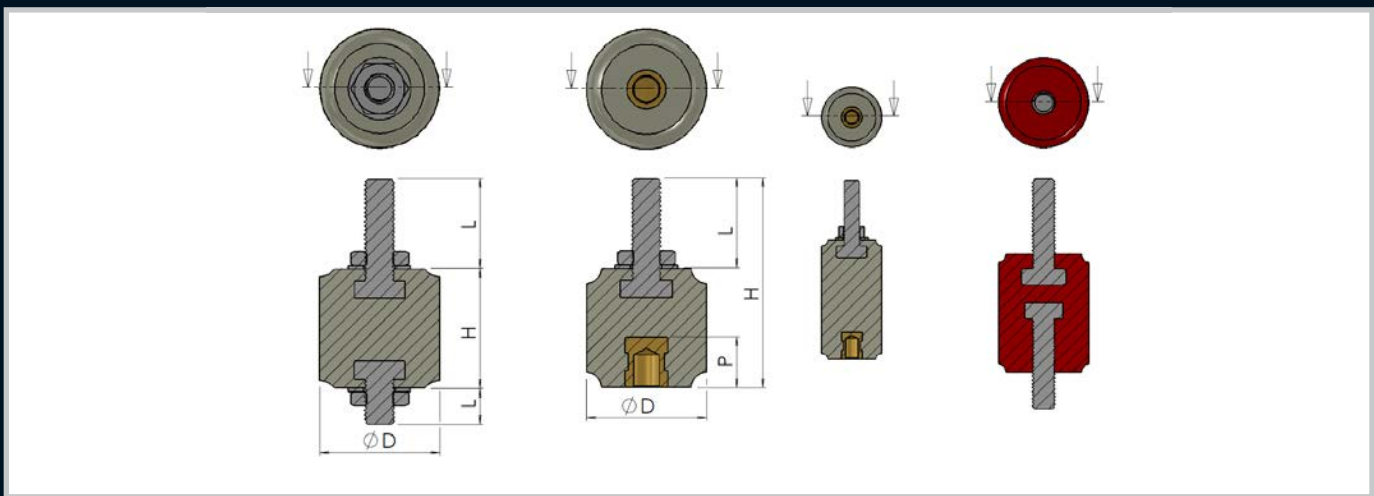
Index



PART NUMBER	TYPE & THREAD SIZE	H	D	L	STUD /INSERT	UNIT MASS	STD PACK
050-056	SL-6R	40	20	20	M6	26g	50
050-008	SL-6W	40	20	20	M6	26g	50
050-058	SL-6/BK	40	20	20	M6	26g	50
050-057	SL-6/BL	40	20	20	M6	26g	50
050-010	SL-8/W	40	30	25	M8	40g	100
050-064	SL-8/BK	40	30	25	M8	40g	100
050-063	SL-8/BL	40	30	25	M8	40g	100
050-062	SL-8/R	40	30	25	M8	40g	100
050-012	SL-10/W	40	40	30	M10	80g	100
050-070	SL-10/BK	40	40	30	M10	80g	100
050-069	SL-10/BL	40	40	30	M10	80g	100
050-068	SL-10/R	40	40	30	M10	80g	100
050-219	SL-10/S1	40	40	30	M10	80g	100
050-210	SL-12/W	50	50/60	16	M12	190g	50
050-278	SL-12/BK	50	50/60	16	M12	190g	50
050-277	SL-12/BL	50	50/60	16	M12	190g	50
050-276	SL-12/R	50	50/60	16	M12	190g	50

# Low Voltage Insulators

## SPL - Series



PART NUMBER	TYPE & THREAD SIZE	H	D	P	L	STUD /INSERT	UNIT MASS	STD PACK
050-315	SPL-6/BK	40	20	12	20	M6	26g	50
050-314	SPL-6/BL	40	20	12	20	M6	26g	50
050-313	SPL-6/R	40	20	12	20	M6	26g	50
050-198	SPL-6/W	40	20	12	20	M6	26g	50
050-318	SPL-8BK	40	30	15	25	M8	40g	100
050-317	SPL-8/BL	40	30	15	25	M8	40g	100
050-316	SPL-8/R	40	30	15	25	M8	40g	100
050-199	SPL-8/W	40	30	15	25	M8	40g	100
050-343	SPL-8 S/STEEL WHITE	40	30	15	25	M8	40g	100
050-344	SPL-8 S/STEEL RED	40	30	15	25	M8	40g	100
050-345	SPL-8S/STEEL BLUE	40	30	15	25	M8	40g	100
050-346	SPL-8 S/STEEL BLACK	40	30	15	25	M8	40g	100
050-321	SPL-10/BK	40	30	17	30	M10	80g	100
050-320	SPL-10/BL	40	40	17	30	M10	80g	100
050-319	SPL-10/R	40	40	17	30	M10	80g	100
050-200	SPL-10/W	40	40	17	30	M10	80g	100
050-295	SPL-10S/STEEL RED	40	40	17	30	M10	80g	100
050-296	SPL-10S/STEEL BLUE	40	40	17	30	M10	80g	100
050-297	SPL-10S/STEEL WHITE	40	40	17	30	M10	80g	100
050-304	SPL-10S/STEEL BK	40	40	17	30	M10	80g	100
050-324	SPL-12/BK	50	50/60	16	20/30	M12	190g	50
050-323	SPL-12/BL	50	50/60	16	20/30	M12	190g	50
050-322	SPL-12/R	50	50/60	16	20/30	M12	190g	50
050-201	SPL-12/W	50	50/60	16	20/30	M12	190g	50

Enclosures

Hinges

Locks

Handles

Accessories

Rotary Operating  
Handles

Insulators

Transformer  
Equipment

Index

Enclosures

Hinges

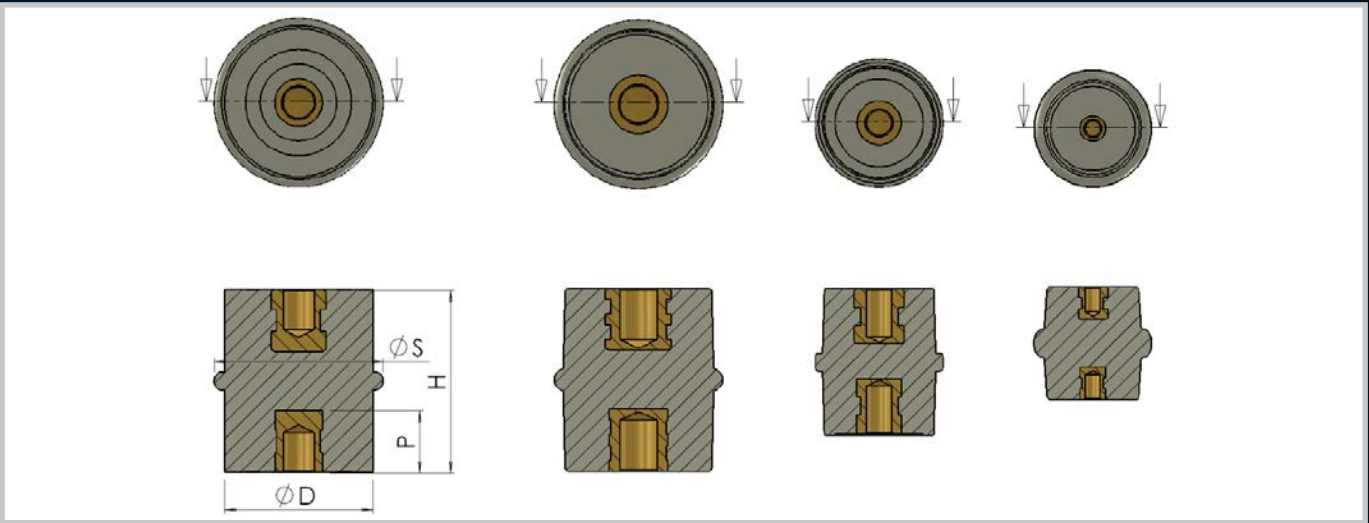
Locks



Handles

Accessories

Rotary Operating Handles



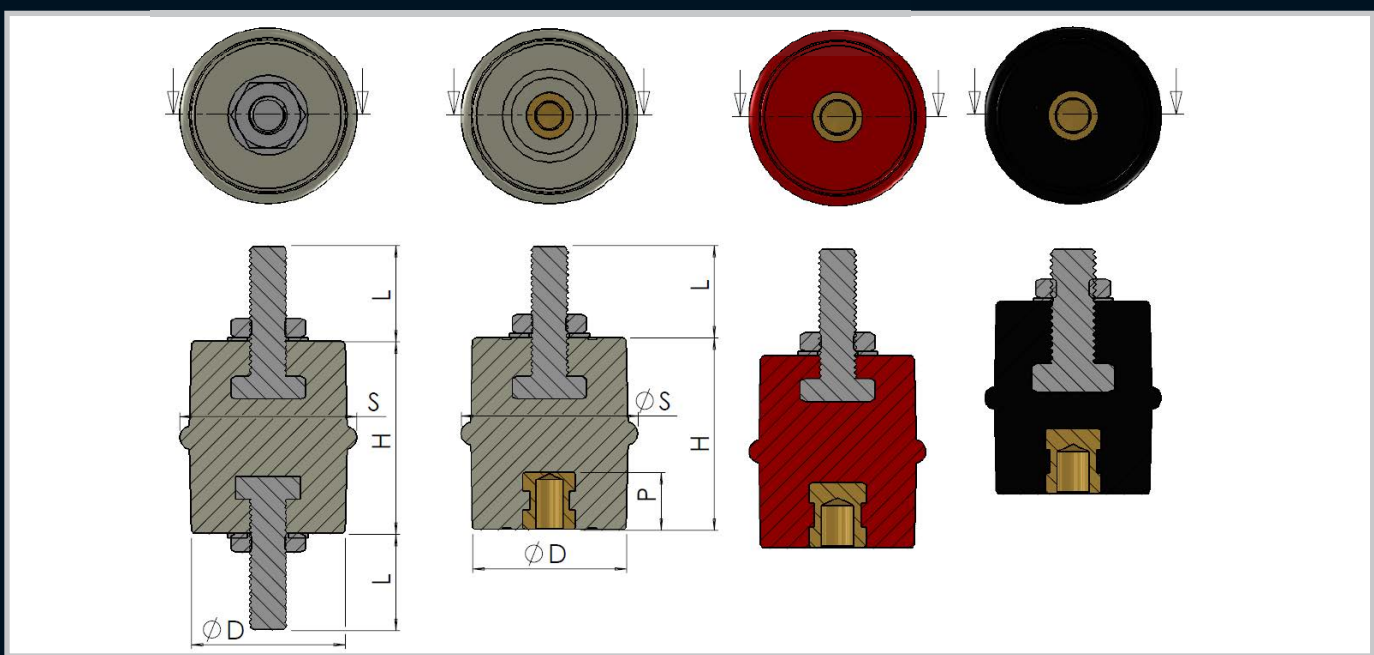
Insulators

Transformer Equipment

Index

PART NUMBER	TYPE & THREAD SIZE	HEIGHT H	DIAMETER D	SHED DIAMETER	STUD LENGTH L	INSERT DEPTH P	UNIT MASS	STD PACK
050-099	CP-6/W	31	25	30	-	11	34g	100
050-099/BL	CP-6/BL	31	25	30	-	11	34g	100
050-099/R	CP-6/R	31	25	30	-	11	34g	100
050-333	CP-6/BK	31	25	30	-	11	34g	100
050-190	CP-8	41	30	35	-	13	68g	100
050-191	CP-10/W	50	40	45	-	12	138g	50
050-305	CP-10/R	50	40	45	-	12	138g	50
050-325	CP-10/BK	50	40	45	-	12	138g	50
050-326	CP-10/BL	50	40	45	-	12	138g	50
050-194	CP-10/12	50	45	45	-	16	236g	50
050-192	CP-12	60	45	60	-	16	236g	50
050-195	CP-12/10	60	45	60	-	15	235g	40
050-213	CP-12/16	60	45	60	-	20	250g	40
050-193	CP-16/W	60	45	60	-	20	250g	40
050-193/BK	CP-16/BK	60	45	60	-	20	250g	40





PART NUMBER	TYPE & THREAD SIZE	HEIGHT H	DIAMETER D	SHED DIAMETER	STUD LENGTH L	INSERT DEPTH P	UNIT MASS
050-217	CL-6	31	25	30	M6	11	34g
050-196	CL-10	50	40	45	30	-	138g
050-197	CPL-10/W	50	40	45	25	15	138g
050-254	CPL-10 S/S BK	50	40	45	30	14	138g
050-252	CPL-10 S/S BL	50	40	45	30	14	138g
050-253	CPL-10 S/S R	50	40	45	30	12	138g
050-251	CPL-10 S/S W	50	40	45	30	12	138g

Enclosures

Hinges

Locks

Handles

Accessories

Rotary Operating  
Handles

Insulators

Transformer  
Equipment

Index

# Low Voltage Insulators

## GL - Series



Enclosures

Hinges

Locks

Handles

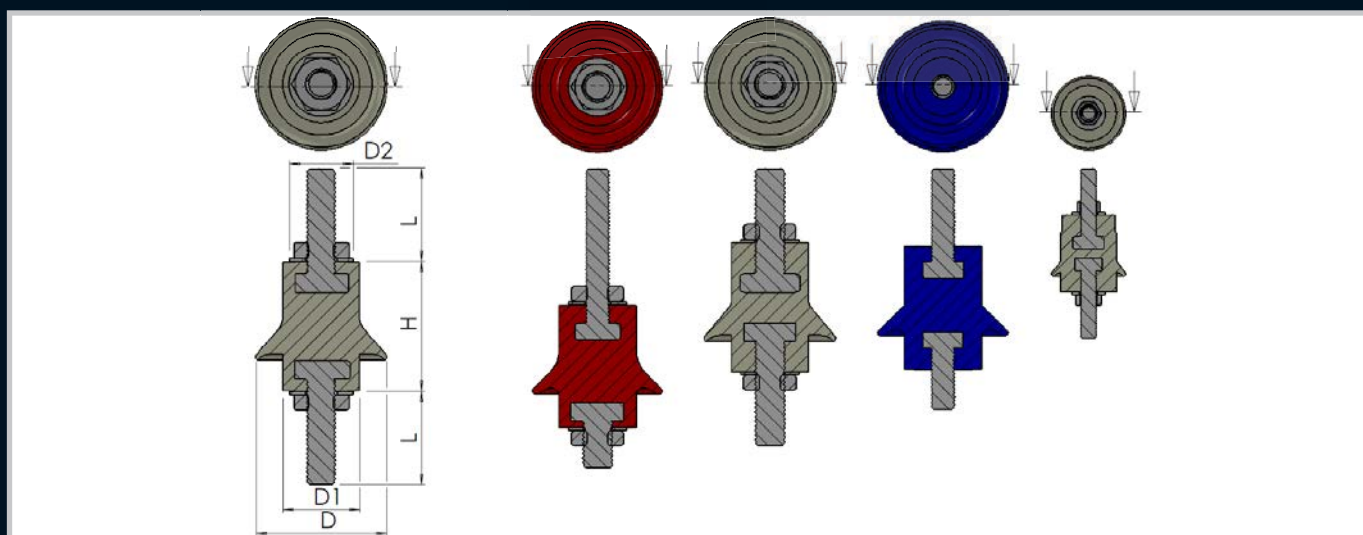
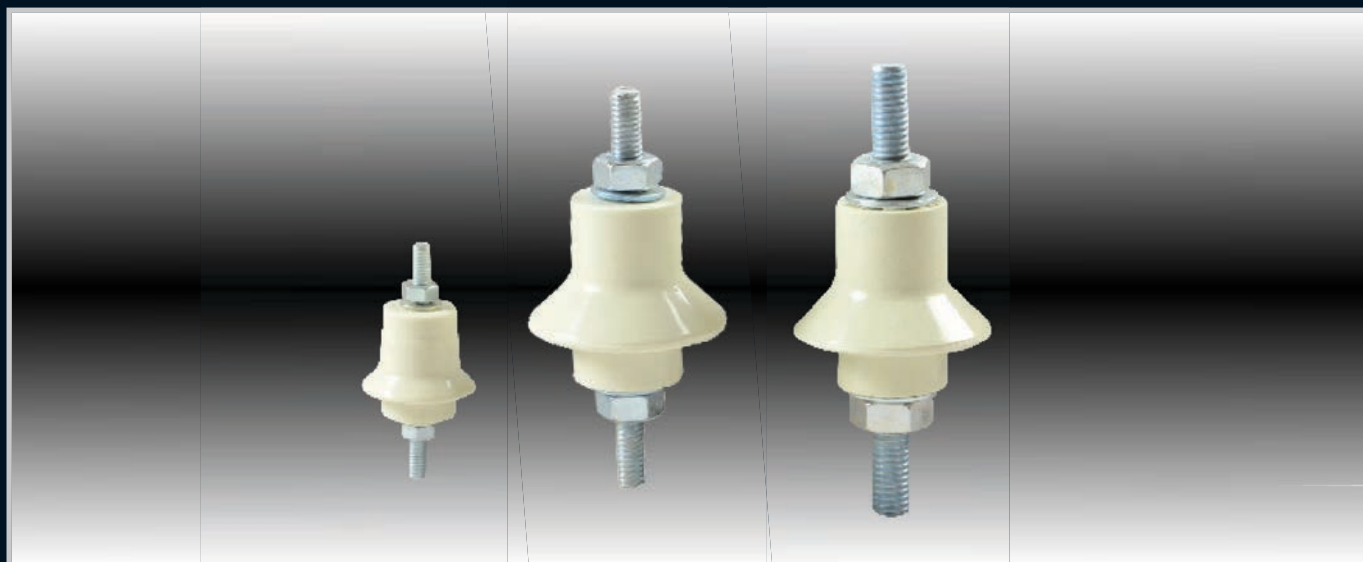
Accessories

Rotary Operating  
Handles

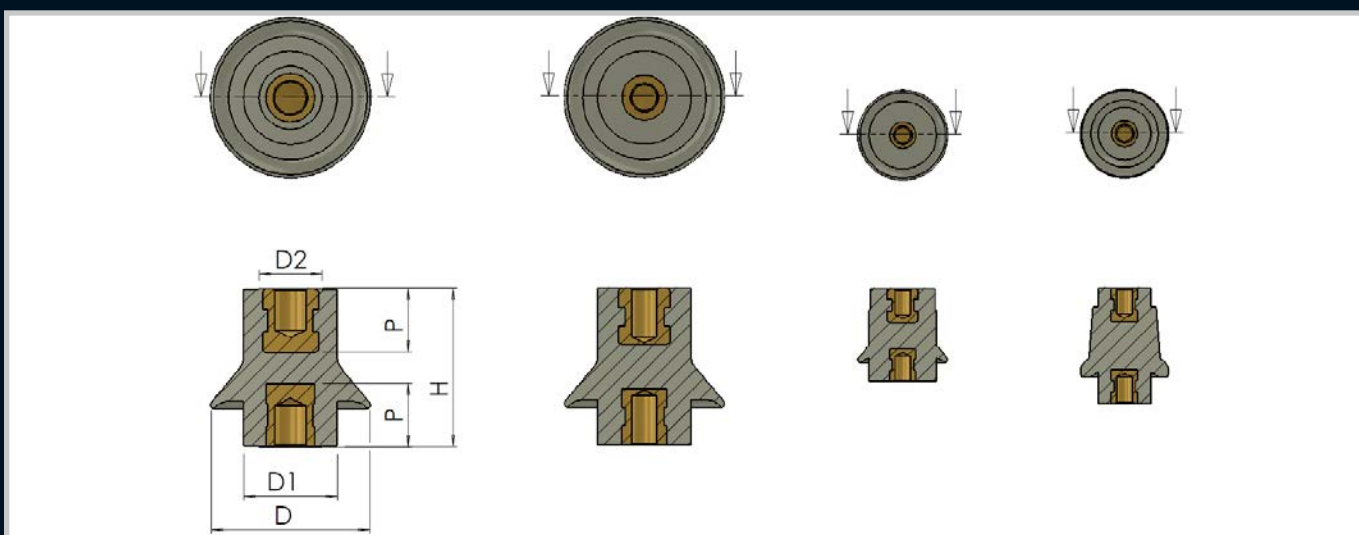
Insulators

Transformer  
Equipment

Index



PART NUMBER	TYPE & THREAD SIZE	H	D	P	L	D1	D2	UNIT MASS	STD PACK
050-040	GL-5/BK	25	26	-	15	17	15	22g	100
050-039	GL-5/BL	25	26	-	15	17	15	22g	100
050-038	GL-5/R	25	26	-	15	17	15	22g	100
050-002	GL-5/W	25	26	-	15	17	15	22g	100
050-046	GL-8/BK	42	45	-	25	25	15	90g	100
050-045	GL-8/BL	42	45	-	25	25	15	90g	100
050-044	GL-8/R	42	45	-	25	25	15	90g	100
050-004	GL-8/W	42	45	-	25	25	15	90g	100
050-052	GL-10/BK	42	45	-	30	25	15	114g	100
050-051	GL-10/BL	42	45	-	30	25	15	114g	100
050-050	GL-10/R	42	45	-	30	25	15	114g	100
050-006	GL-10/W	42	45	-	30	25	15	114g	100



PART NUMBER	TYPE & THREAD SIZE	H	D	P	L	D1	D2	UNIT MASS	STD PACK
050-037	GP-5/BK	25	26	8	-	17	15	16g	100
050-036	GP-5/BL	25	26	8	-	17	15	16g	100
050-035	GP-5/R	25	26	8	-	17	15	16g	100
050-001	GP-5/W	25	26	8	-	17	15	16g	100
050-270	GP-5/RAISED BL	31	17	8	-	14	9	17g	100
050-271	GP-5/RAISED BK	31	17	8	-	14	9	17g	100
050-272	GP-5/RAISED R	31	17	8	-	14	9	17g	100
050-043	GP-8/BK	42	45	15	-	25	15	68g	100
050-042	GP-8/BL	42	45	15	-	25	15	68g	100
050-041	GP-8/R	42	45	15	-	25	15	68g	100
050-003	GP-8/W	42	45	15	-	25	15	68g	100
050-049	GP-10/BK	42	45	17	-	25	15	78g	100
050-048	GP-10/BL	42	45	17	-	25	15	78g	100
050-047	GP-10/R	42	45	17	-	25	15	78g	100
050-005	GP-10/W	42	45	17	-	25	15	78g	100

Enclosures

Hinges

Locks

Handles

Accessories

Rotary Operating  
Handles

Insulators

Transformer  
Equipment

Index

Enclosures

Hinges

Locks

Handles

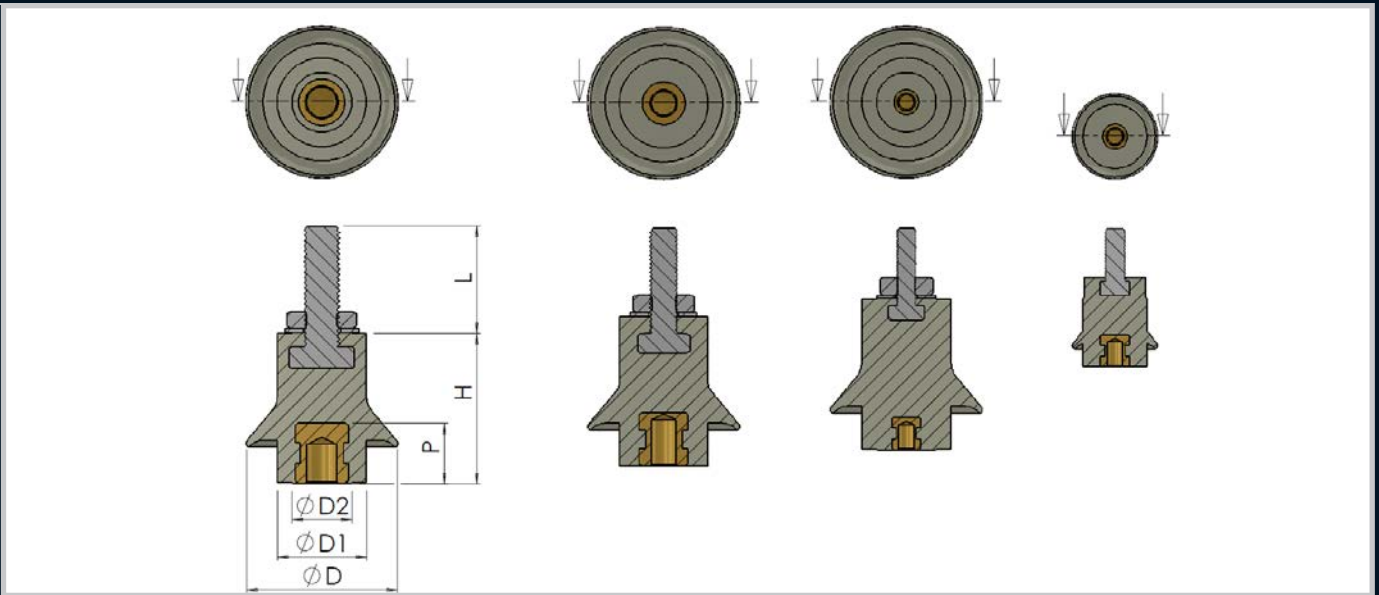
Accessories

Rotary Operating  
Handles

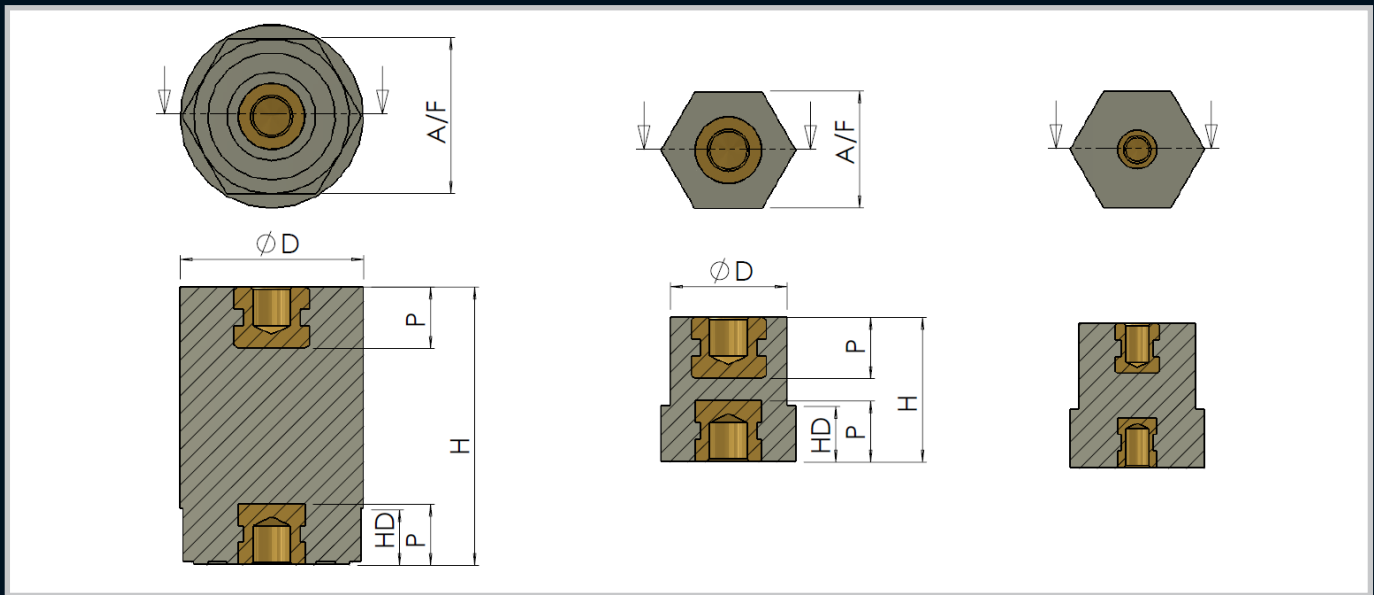
Insulators

Transformer  
Equipment

Index



PART NUMBER	TYPE & THREAD SIZE	H	D	P	L	D1	D2	UNIT MASS	STD PACK
070-185	GPL-5W	25	26	8	16	17	15	19g	100
050-300	GPL-6W	25	45	8	16	25	15	64g	100
050-298	GPL-6R	25	45	8	16	25	15	64g	100
050-299	GPL-6BL	25	45	8	16	25	15	64g	100
050-327	GPL-6BK	25	45	8	16	25	15	64g	100
050-216	GPL-8W	25	45	8	16	25	15	76g	100
050-214	GPL-10W	25	45	8	16	25	15	100g	100



PART NUMBER	TYPE & THREAD SIZE	HEIGHT H	DIAMETER D	HEX DEPTH HD	STUD LENGTH L	INSERT DEPTH P	ACROSS FLATS
050-030	HP-8/W	50	33	10	-	9	28
050-083	HP-8/R	50	33	10	-	9	28
050-083/10R	HP-8/10R	50	33	10	-	10	28
050-084	HP-8/BL	50	33	10	-	9	28
050-085	HP-8/BK	50	33	10	-	9	28
050-310	HP-6/8	25	33	10	-	9	28
050-093	HP-6	26	20	10	-	9	21
050-273	HP-6 R	26	20	10	-	9	21
050-274	HP-6 BL	26	20	10	-	9	21
050-275	HP-6 BK	26	20	10	-	9	21

Enclosures

Hinges

Locks

Handles

Accessories

Rotary Operating  
Handles

Insulators

Transformer  
Equipment

Index

Enclosures

Hinges

Locks

Handles

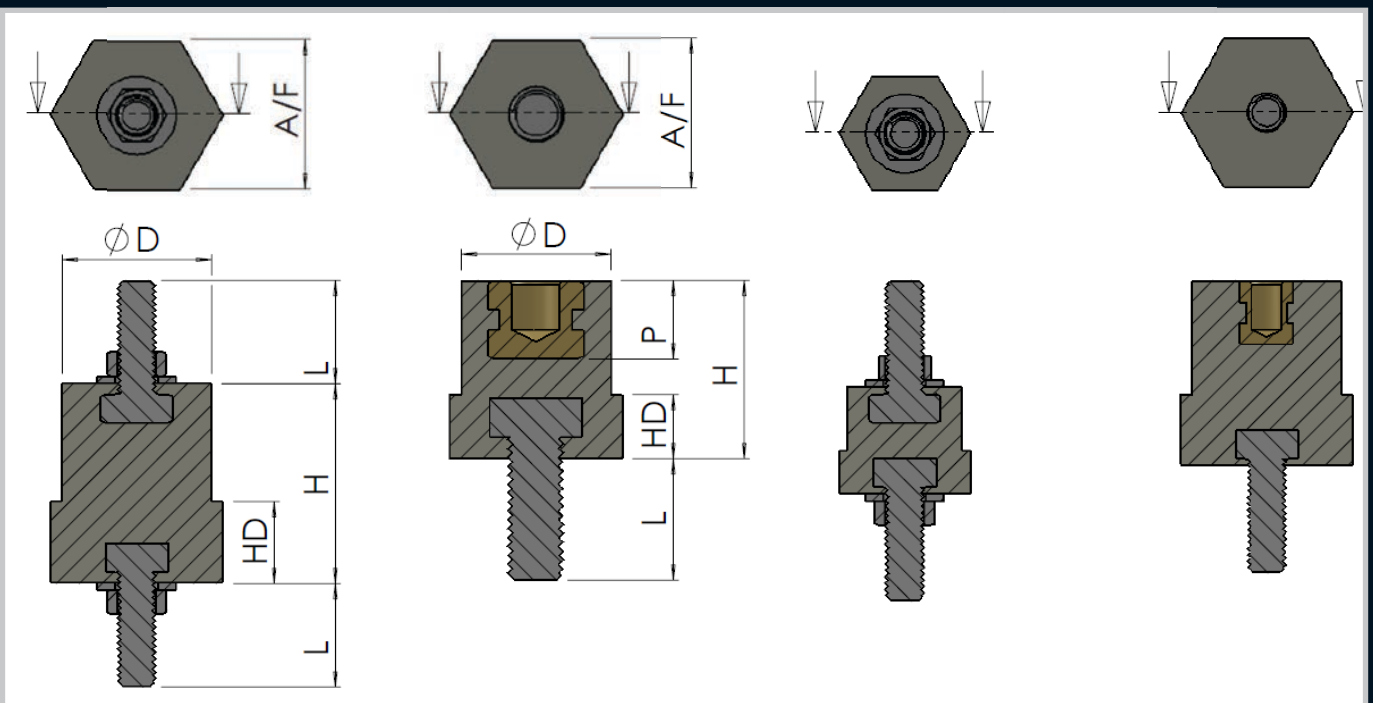
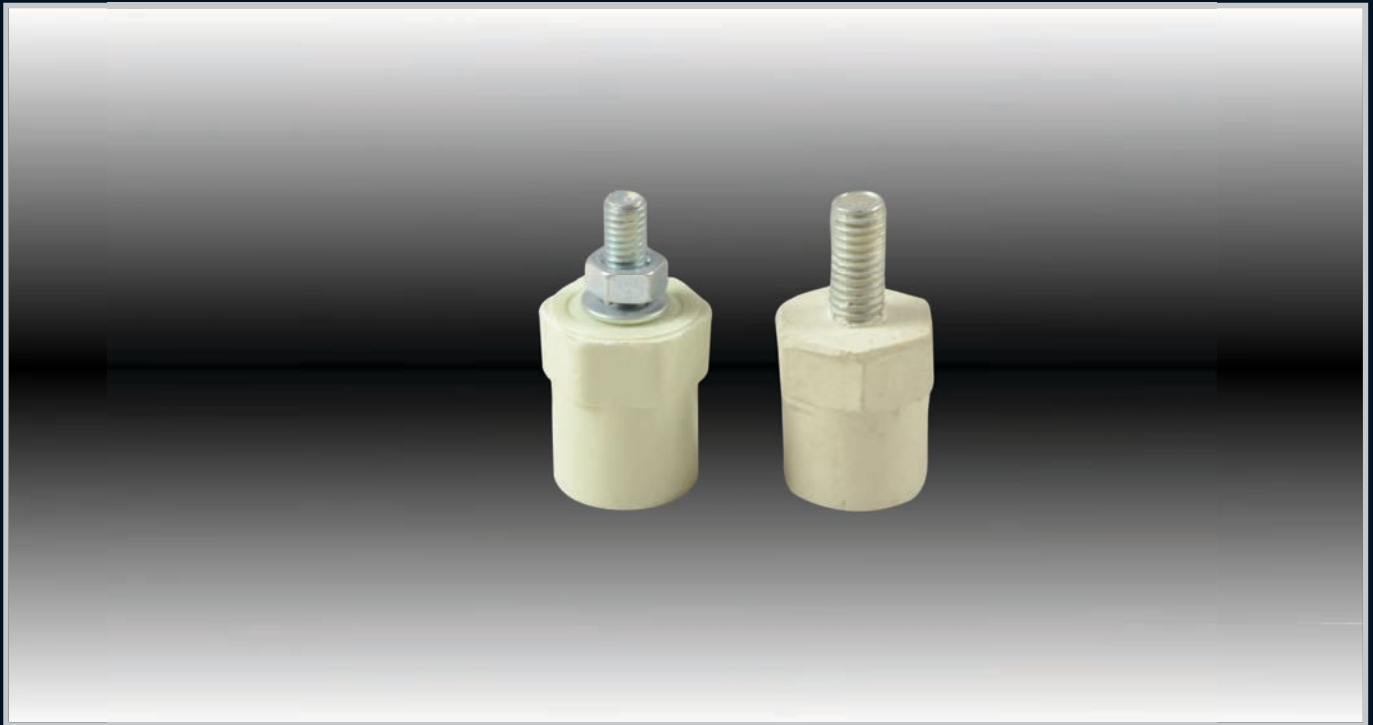
Accessories

Rotary Operating  
Handles

Insulators

Transformer  
Equipment

Index



PART NUMBER	TYPE & THREAD SIZE	HEIGHT H	DIAMETER D	HEX DEPTH HD	STUD LENGTH L	INSERT DEPTH P	ACROSS FLATS
050-095	HPL-6	20	20	10	15	10	21
050-098	HPL-6/8	25	20	10	17	11	21
050-092	HL-5	15	15	6	15	-	16
050-094	HL-6W	28	20	6	15	-	21



PART NUMBER	TYPE & THREAD SIZE	L	C	W	H	STUD LENGTH	UNIT MASS	INSERT DEPTH P	STD PACK
050-020	IL-6/2	235	70	25	34	16	182g	-	25
050-021	IL-8	262	70	40	40	25	354g	-	10
050-019	IL-6	190	52	22	30	15	120g	-	50
050-309	IP-8	262	70	40	40	-	349g	15	10
050-307	IP-6	190	52	22	30	-	105g	11	50

Enclosures

Hinges

Locks

Handles

Accessories

Rotary Operating  
Handles

Insulators

Transformer  
Equipment

Index

Enclosures

Hinges

Locks

Handles

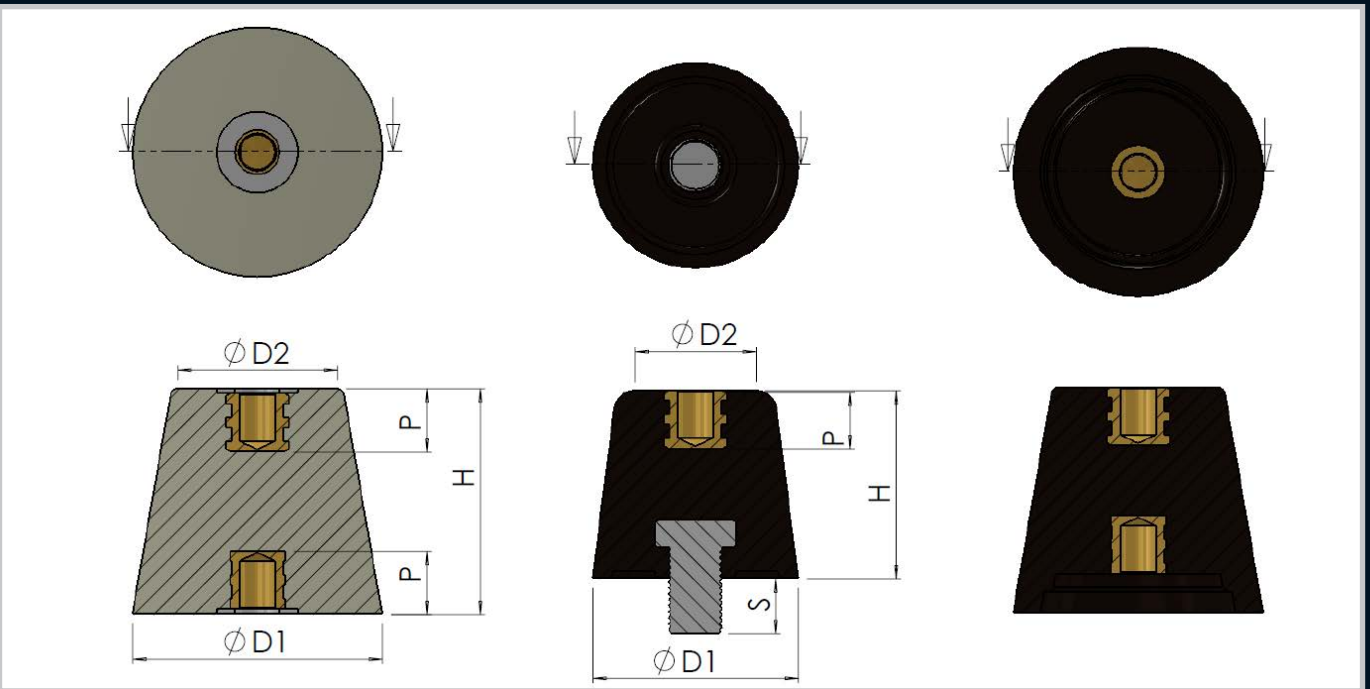
Accessories

Rotary Operating  
Handles

Insulators

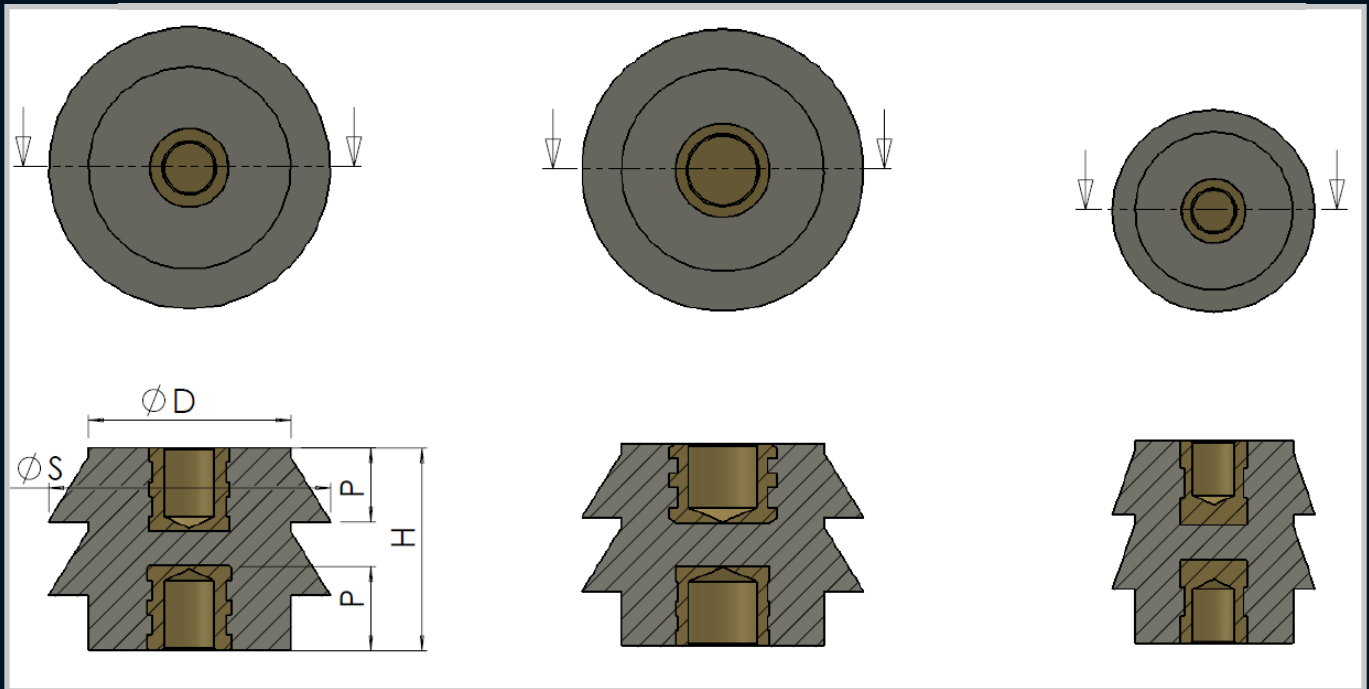
Transformer  
Equipment

Index



PART NUMBER	TYPE & THREAD SIZE	HEIGHT H	DIAMETER D1	DIAMETER D2	STUD LENGTH L	INSERT DEPTH P	UNIT MASS	STD PACK
050-022	SM-1000	55	60	42	12	12	260g	50
050-023	SM-2000	60	72	50	-	12	390	50
050-024	SM-2000 M12	60	72	50	-	16	390	50





PART NUMBER	TYPE & THREAD SIZE	HEIGHT H	DIAMETER D	SHED DIAMETER S	STUD LENGTH L	INSERT DEPTH P	UNIT MASS	STD PACK
050-202	WP-10	41	32	41	-	12	88g	50
050-203	WP-12/10	41	41	57	-	16/12	152g	20
050-204	WP-12/16	41	41	57	-	16/16	160g	50

- Enclosures
- Hinges
- Locks
- Handles
- Accessories
- Rotary Operating Handles
- Insulators
- Transformer Equipment
- Index

Enclosures

Hinges

Locks

Handles

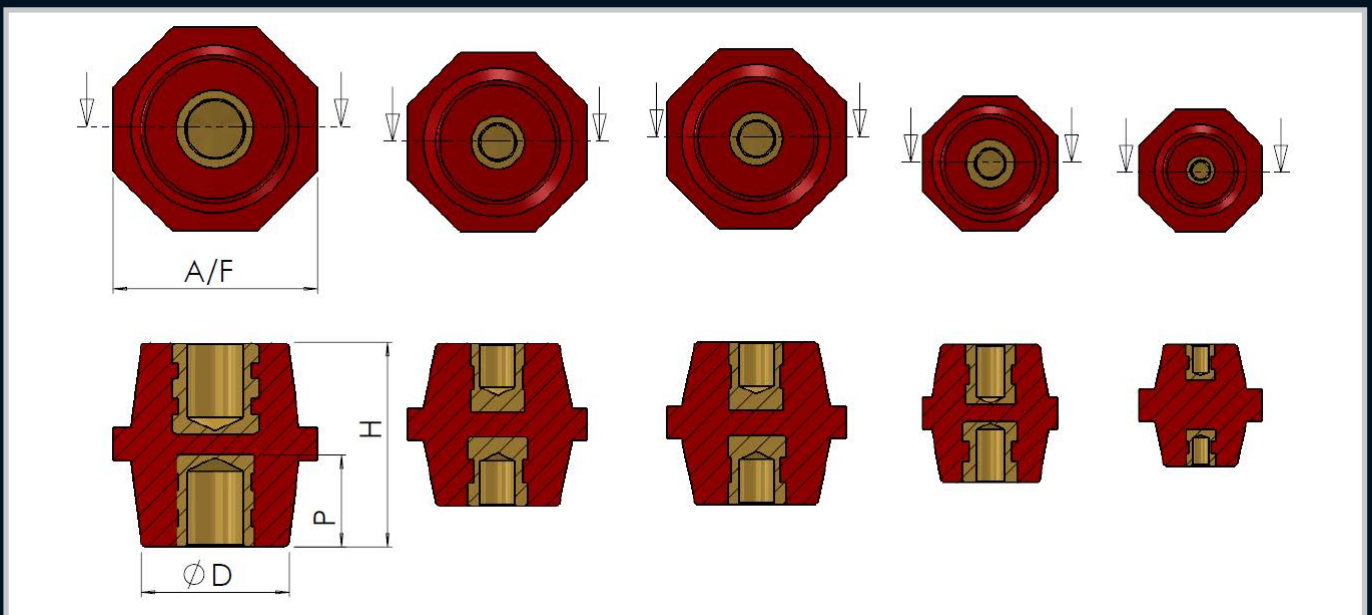
Accessories

Rotary Operating  
Handles

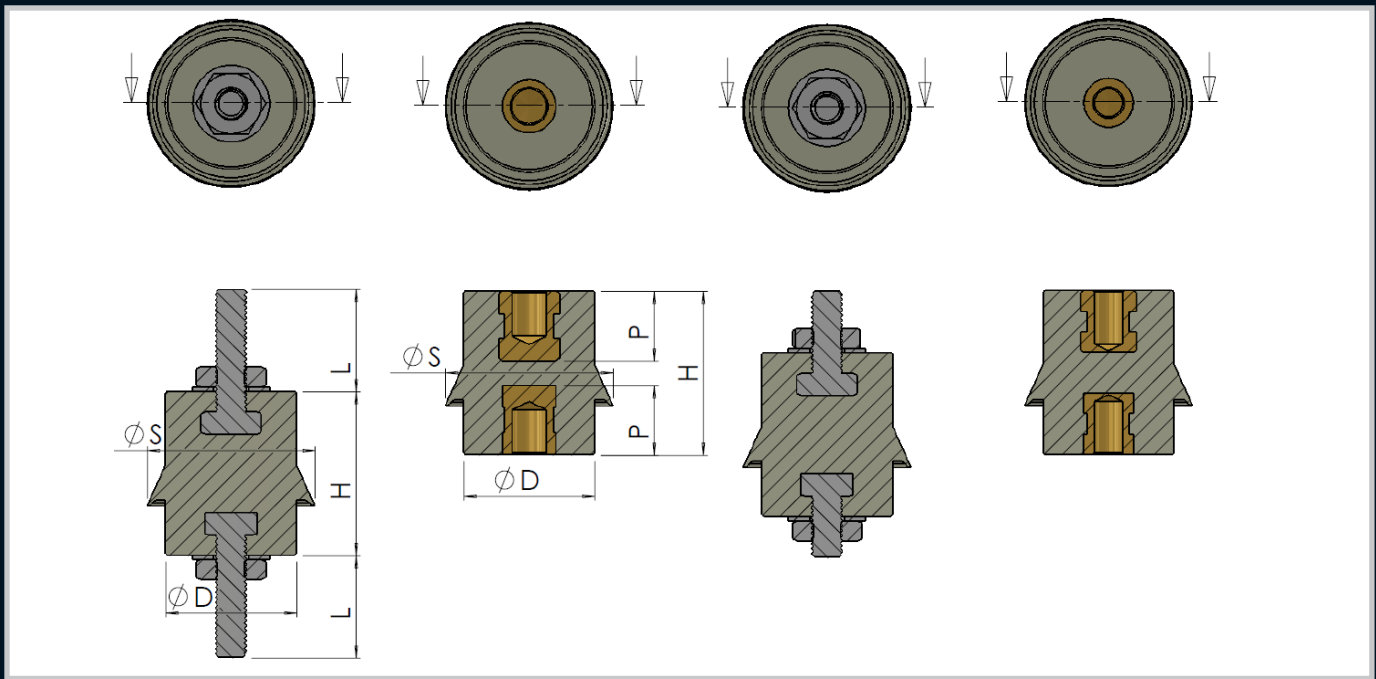
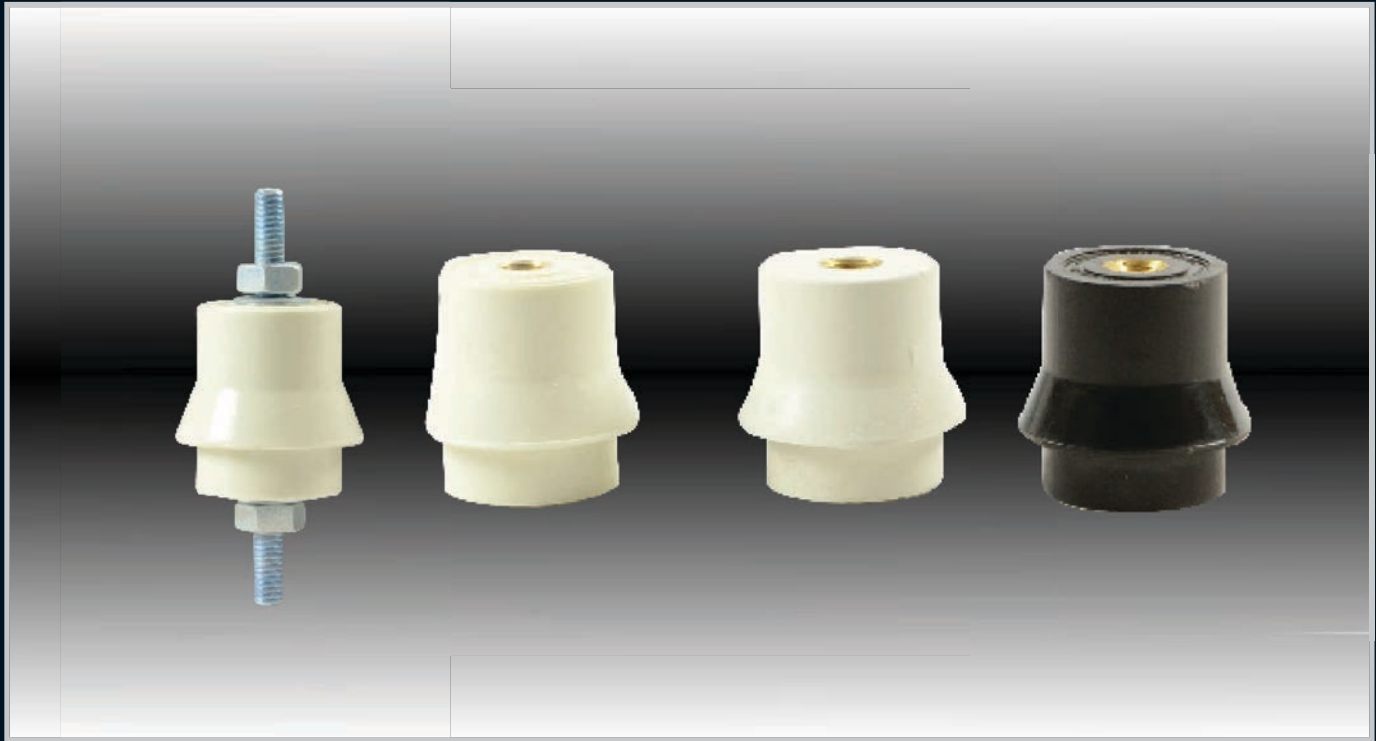
Insulators

Transformer  
Equipment

Index



PART NUMBER	TYPE & THREAD SIZE	HEIGHT H	DIAMETER D	ACROSS FLATS	INSERT DEPTH P	UNIT MASS	STD PACK
050-337	OP-6	30	20	30	9	30g	200
050-338	OP-8	35	25	32	11	52g	100
050-370	OP-8/10	35	25	32	15	52g	100
050-359	OP-8/40	40	26	30	10	61.2g	100
050-240	OP-8/50H/35AF	50	35	32	15	52g	100
050-339	OP-10	40	30	44	12	92g	50/100
050-341	OP-12	52	35	50	16	140g	50
050-349	OP-12/8	50	35	50	15	128g	50
050-340	OP-12/10	50	35	50	12	133g	50
050-360	OP-13/8	51	29	36	9.5	86g	50
050-361	OP-13/10	51	28/29	36	11	88g	50
050-362	OP-14/8	76	35	50	9.5	224g	50
050-363	OP-14/10	76	35	50	11	226g	50



PART NUMBER	TYPE & THREAD SIZE	HEIGHT H	DIAMETER D	SHED DIAMETER	STUD LENGTH L	INSERT DEPTH P	UNIT MASS	STD PACK
050-028	VP-8/W	40	30	41	-	11	78g	100
050-077	VP-8/R	40	30	41	-	11	78g	100
050-078	VP-8/BL	40	30	41	-	11	78g	100
050-079	VP-8/BK	40	30	41	-	11	78g	100
050-029	VL-8/W	40	30	41	25	-	102g	100
050-080	VL-8/R	40	30	41	25	-	102g	100
050-081	VL-8/BL	40	30	41	25	-	102g	100
050-082	VL-8/BK	40	30	41	25	-	102g	100
050-224	VP-10	40	30	41	-	16	80g	100

- Enclosures
- Hinges
- Locks
- Handles
- Accessories
- Rotary Operating Handles
- Insulators
- Transformer Equipment
- Index

Enclosures

Hinges

Locks

Handles

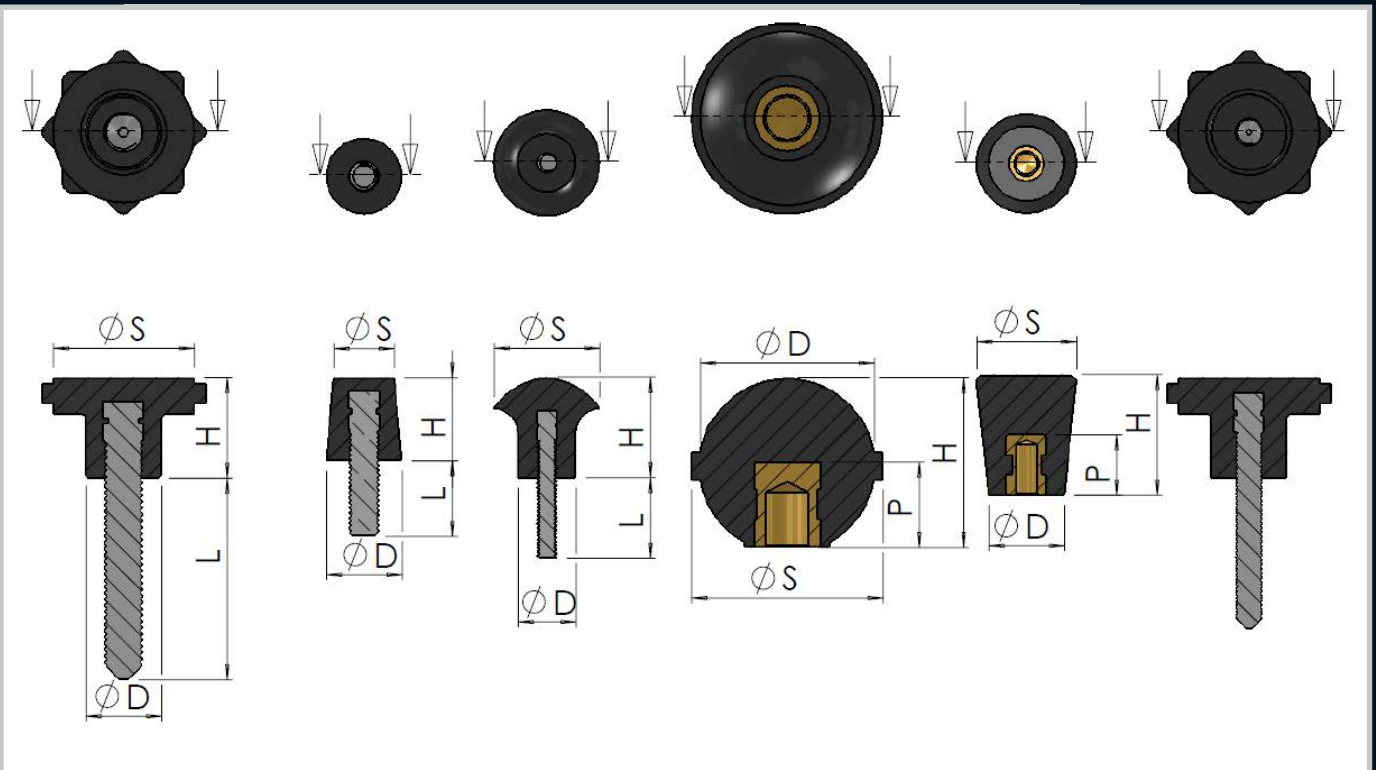
Accessories

Rotary Operating  
Handles

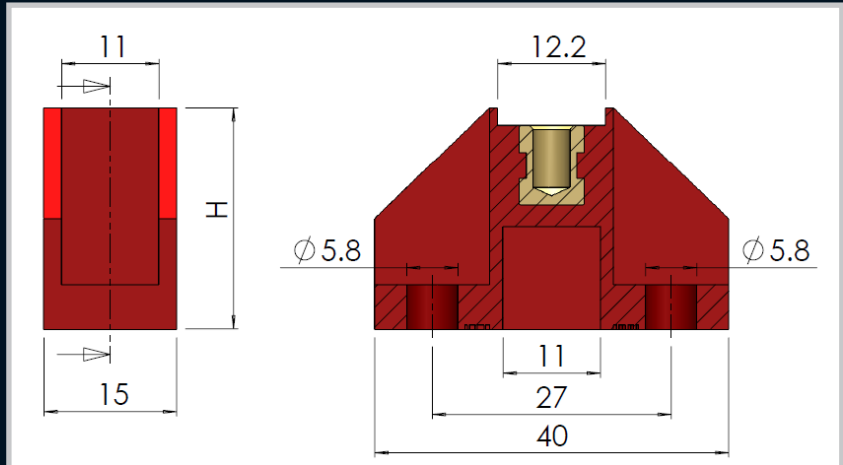
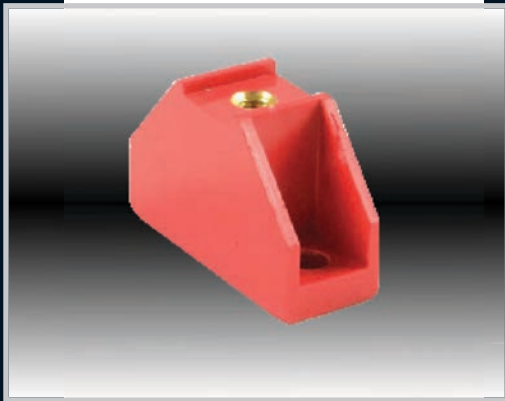
Insulators

Transformer  
Equipment

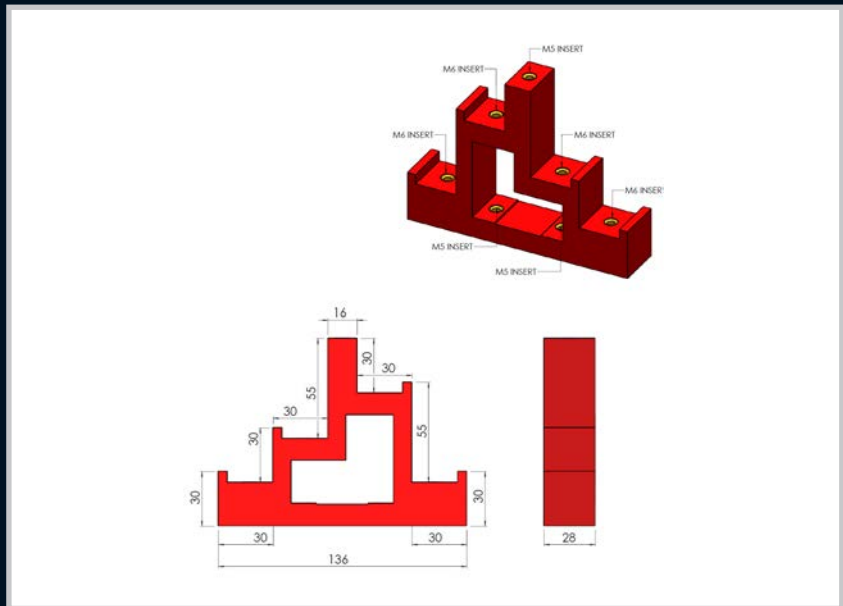
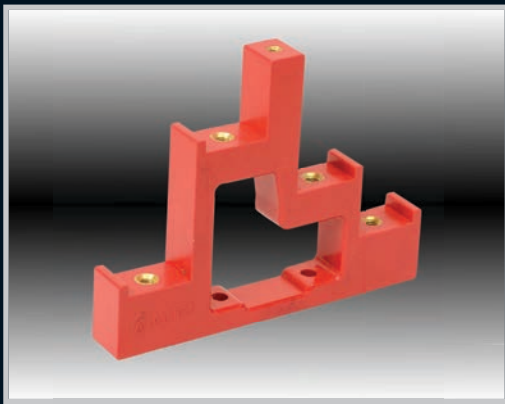
Index



PART NUMBER	TYPE & THREAD SIZE	STUD SIZE	HEIGHT H (mm)	DIAMETER D (mm)	SHED DIAMETER S (mm)	STUD LENGTH L (mm)	INSERT DEPTH P (mm)	UNIT MASS
020-329	K4	M4	18	12/20	22	15	10	22g
050-239	K6 x 30	M6	20	15	28	30	-	20g
050-232	K8 x 40	M8	20	15	28	40	-	32g
050-301	K8 x 50	M8	20	15	28	50	-	32g
050-311	K6	M6	24	15	20	-	12	22g
050-249	K10	M10	34	34	38	-	17	35g
070-141	HAND WHEEL	M10	55	23	100	-	17	130g



Part Number	Description
050-354	Red Stepped Insulator



Part Number	Description
050-172	Red stepped Insulator

- Enclosures
- Hinges
- Locks
- Handles
- Accessories
- Rotary Operating Handles
- Insulators
- Transformer Equipment
- Index

Enclosures

Hinges

Locks

Handles

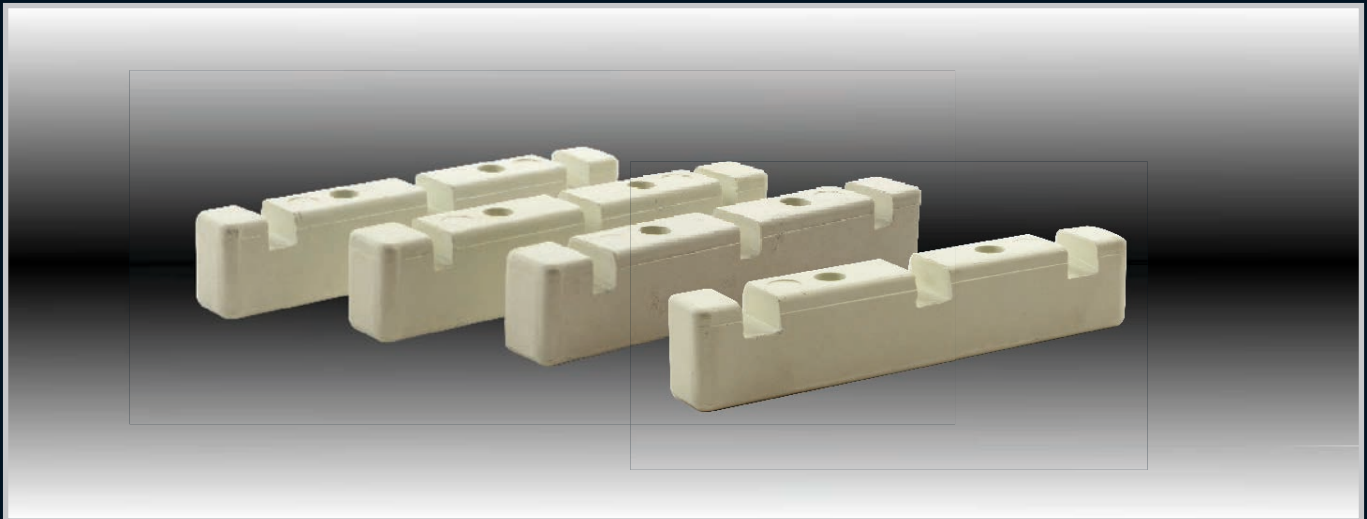
Accessories

Rotary Operating  
Handles

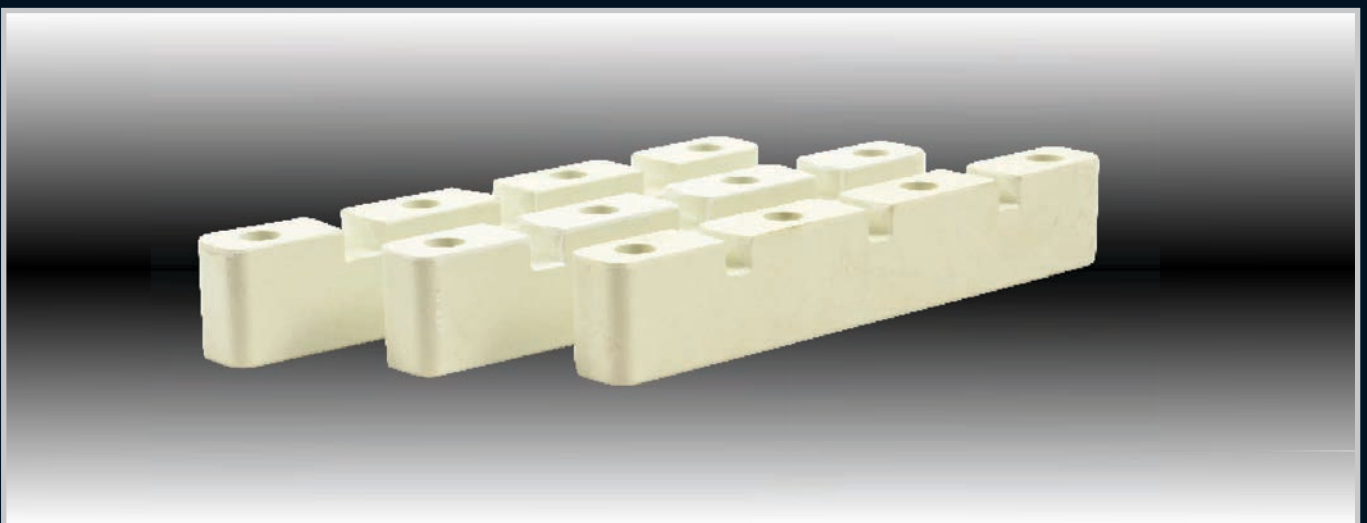
Insulators

Transformer  
Equipment

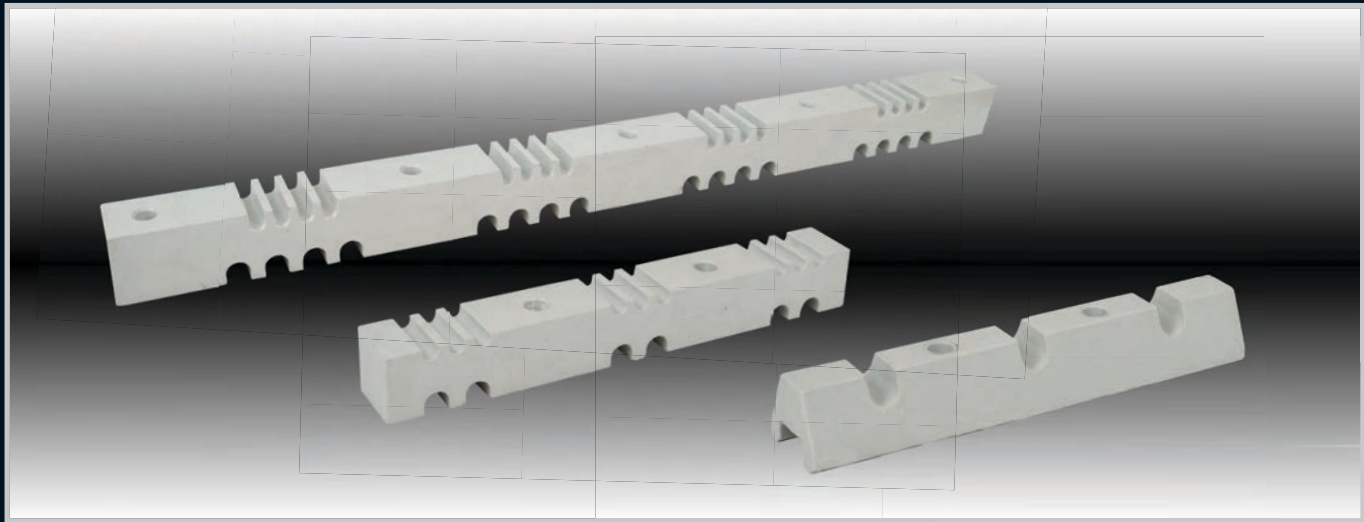
Index



PART NUMBER	DESCRIPTION	NO.OF SLOTS / PHASE	SIZE OF SLOTS (mm)	CLAMP HOLES	UNIT MASS (g)
050-026	3 CEN 7	1	7	2	0.25
050-233	3 CEN RAISED 7	1	7	2	0.35
050-229	3 CEN 10	1	10	2	0.25
050-234	3 CEN RAISED 10	1	10	2	0.35
050-230	3 CEN 12	1	12	2	0.25
050-235	3 CEN RAISED 12	1	12	2	0.35
050-231	3 CEN 14	1	14	2	0.25
050-236	3 CEN RAISED 14	1	14	2	0.35



PART NUMBER	DESCRIPTION	NO.OF SLOTS / PHASE	SIZE OF SLOTS (mm)	CLAMP HOLES	UNIT MASS (g)
070-049	B/B Supp DRG 441303 A	1	9	2	0.73
070-053	B/B Supp DRG 41302 A	1	7	2	0.73
070-054	B/B Supp DRG A 441304 REV 2	3	9	4	0.30
070-055	B/B Supp DRG A 441305 REV 2	3	11	4	0.30



PART NUMBER	DESCRIPTION	NO.OF SLOTS / PHASE	SIZE OF SLOTS (mm)	CLAMP HOLES	UNIT MASS
050-367	AL180/7mm	3	7	2	160g
050-364	AL180/11mm	3	11	2	160g
050-365	AL270	6 and 9	12.6 and 8	2	486g
050-366	AL600	16 and 16	12.5 and 8	5	1.194kg

Enclosures

Hinges

Locks

Handles

Accessories

Rotary Operating  
Handles

Insulators

Transformer  
Equipment

Index

Enclosures

Hinges



Locks

Handles

PART NUMBER	DESCRIPTION	AMPS	VOLTS
FH32	Din Fuse Holder 10 x 38 - 1 Pole RT18-32 with Lamp	32 A	690 V
FH63	Din Fuse Holder 14 x 51- 1 Pole RT18-63 with Lamp	63 A	690 V
F2A	Ceramic Fuse to Suit RT18 Circuit Breaker Fuse Holder	2 A	-
F4A	Ceramic Fuse to Suit RT18 Circuit Breaker Fuse Holder	4 A	-
F6A	Ceramic Fuse to Suit RT18 Circuit Breaker Fuse Holder	6 A	-
F10A	Ceramic Fuse to Suit RT18 Circuit Breaker Fuse Holder	10 A	-
F16A	Ceramic Fuse to Suit RT18 Circuit Breaker Fuse Holder	16 A	-
F20A	Ceramic Fuse to Suit RT18 Circuit Breaker Fuse Holder	20 A	-
F32A	Ceramic Fuse to Suit RT18 Circuit Breaker Fuse Holder	32 A	-
F63A	Ceramic Fuse to Suit RT18 - 63 14 x 51 Circuit Breaker Fuse Holder	63 A	-

Accessories

**Remarks:**  
 3 Pole Fuse Holder Kits available on request.  
 Part Number: 3POLE/KIT-32A  
 3POLE/KIT-63A

Rotary Operating  
Handles

Insulators

Transformer  
Equipment

Index